

- 4 (5) Elytra green; membrane smoky brown with whitish pattern, veins green. Vesica simple, very long and slender, strongly curved, apical part nearly circular in lateral aspect. Upper surface with double hair covering. Range: East Africa .. *Stibaromma* Odh.
- 5 (4) Elytra and veins of membrane not green. Vesica different 6
- 6 (7) Vesica slender, strongly curved, S-shaped, with two long falcate apical appendages. Pseudarolia distinct. Range: Madeira
 *Chinacapsus* Wgn.
- 7 (6) Vesica relatively robust, shallowly curved, C-shaped, ending in a membranous, apically dentate lobe, with one or two short falcate apical processes. Pseudarolia distinct. Range: the Canary Islands, Morocco .. *Lindbergocapsus* Wgn
- 8 (1) Tibial spines pale 9
- 9 (12) Tibiae immaculate. Upper surface with simple hair covering .. 10
- 10 (11) Uniformly pale yellowish species. Tylus (Fig. 3b) in profile strongly protruding, basal margin of vertex not raised. Lateral margins of pronotum (Fig. 3a) insinuated, calli small and fairly distinct. Vesica rather short and robust, dorsal surface dentate, gonopore near apex. Range: Senegal
 *Dominiquella* gen. n.
- 11 (10) Color not pale yellow. Tylus (Fig. 4g) in profile only narrowly visible, basal margin of vertex distinctly raised. Lateral margins of pronotum slightly curved, calli largish and rather poorly delimited. Vesica long and slender or at any rate ending in a thin flagellate apical part, gonopore far from apex. Range: intertropical
 *Paramixia* Rt. (= *Cephalocapsus* Pop., *Orthotylellus* Kn., *Troitskiella* Pop.)
- 12 (9) Tibiae (Fig. 4f) with distinct black spots. Upper surface with double hair covering, with longish semidecumbent pale hair and adpressed silvery pubescence 13
- 13 (14) Color black. Head broad, strongly declivous, tylus in profile only

narrowly visible, base of vertex sharply marginate. Pseudarolia absent. Range: mountain regions of East Africa *Paramixia* Rt. subgen. *Schroederiella* Pop.

- 14 (13) Color pale yellowish with reddish irroration. Head (Fig. 4c-d) very narrow, strongly prolonged, tylus in profile prominent, base of vertex marginate only laterally. Pseudarolia visible (Fig. 4e). Range: Sudan *Nubaia* Lv. (recently described in LINNAVUORI 1975: 90—91).

Dominiquella gen. n.

Small yellow species. Legs immaculate, tibial spines pale.

Body elongately ovate, robust, 2.6 (♀) — 2.8 (♂) × as long as broad at base of pronotum. Hair covering of upper surface dense, semidecumbent, yellow. Head (Fig.

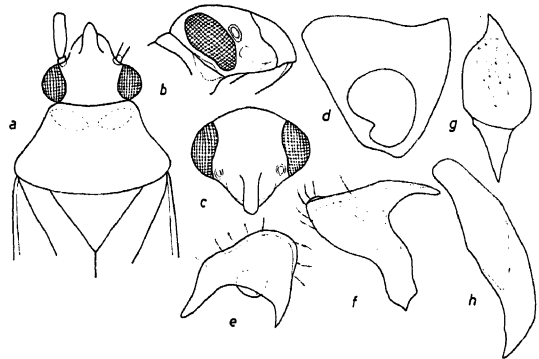


Fig. 3. *Dominiquella vitellina* gen. et sp. n.: a head and pronotum; b head, lateral view; c same, apical view, d pygophore; e left stylus from above; f same from side; g right stylus; h theca.

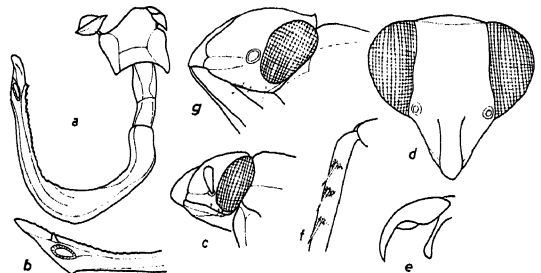


Fig. 4. *Dominiquella vitellina* gen. et sp. n.: a vesica; b apex of same. — *Nubaia longiceps* Lv.: c head from side; d same, apical view; e claw; f spinulation of hind tibia. — *Paramixia suturalis* Rt.: g head from side.