

Kassala: Kassala - Hatya, 1 ♀, type, 1 - 3. XII. 1962.
At lamp.

Phylinae

Shendina gen. n.

Very small species. Parallel-sided. Hairs of upper surface black. Head (Fig. 53 k - l) vertical, globose, shiny, $0.73 \times$ as broad as basal width of pronotum, in apical view as broad as high, in side view $0.65 \times$ as long as high; tylus distinctly separated from frons, convex; vertex and frons remarkably convex, the former not marginate basally; eyes not granulate. Antennae short, arising near lower angle of eyes, 2nd joint nearly twice as long as diatone. Rostrum extending beyond hind coxae. Pronotum short, transverse, $2.5 \times$ as broad as long, anterior and basal margins insinuated, lateral margins straight, disk flat, calli not differentiated. Prosternal xyphus convex, immarginate. Elytra well developed, with callose pale areas with dark puncturation. Legs rather short, immaculate, apex of hind femora black; anterior and middle tibiae without bristles, spines of hind tibiae black. Hind tarsal joints short, proportions between joints 5 : 6 : 6. Claws (Fig. 53 m) short, provided with a distinct basal tooth, pseudarolia triangular, extending to near apex of claw, free. Male genitalia: right stylus small; left stylus with a strongly curvate, thin hypophysis, sensory lobe rather large, with an apical and a dorsal expansion; theca broad, triangular; vesica slender, straight in apical two-thirds, curvate basally, apex with short processes, gonopore in apical part.

Type: *S. globiceps* Lv.

✓ *S. globiceps* sp. n.

Length 1.5 mm. Head shiny, black, base of vertex with 2 roundish whitish spots. 1st antennal joint white, with a broad black median ring, 2nd whitish, with a narrow black subbasal ring and apical third fuscous, other joints fuscous, with a pale base. Other parts of upper surface opaque. Golden yellow. Anterior margin of pronotum paler. Clavus and a transverse band at apex of clavus in corium callose, whitish and sparsely spotted with brown. Cuneus orangish, with a whitish basal spot. Membrane brownish, apically with darker shadows, veins pale. Legs yellowish, anterior and middle knees fuscous, hind femora golden yellow with apex black, also hind tibiae basally darkened. Last tarsal joint fuscous.

Ocular index 2.0. Proportions between antennal joints 2.5 : 10 : 8 : ?. Male genitalia as in Fig. 53 n - r.

Northern Province: Shendi - Wad Hassuna, 1 ♂, type and 2 paratypes, 5 - 6. XI. 1962. Swept from desert grasses.

✓ *Camptotylus* Fb.

C. yersini (Ms.) - 2, 2 exx. On *Tamarix*. Holomediterranean.

✓ *Zinjolopus* gen. n.

Resembling *Paralopus* Wgn. (peculiarly striate elytra and large pseudarolia, Fig. 53 s, 55 c), but 1) head considerably shorter, 2) hair covering shorter and smoother, 3) antennae with dark markings, 4) femora and tibiae with distinct black spots, 5) tibial spines black and 6) pseudarolia shorter, slightly shorter than claw.

Type: *Z. elegans* Lv.

✓ *Z. elegans* sp. n.

Fig. 54. Length 2.75 - 3 mm. Shiny. Yellow. Head medially whitish. Antennae yellowish, 1st joint with 2 black spots on inner surface, also base of 2nd with a small black dot. Pronotum medially whitish with a roundish fulvous median basal spot on disk, sometimes also a lateral fulvous

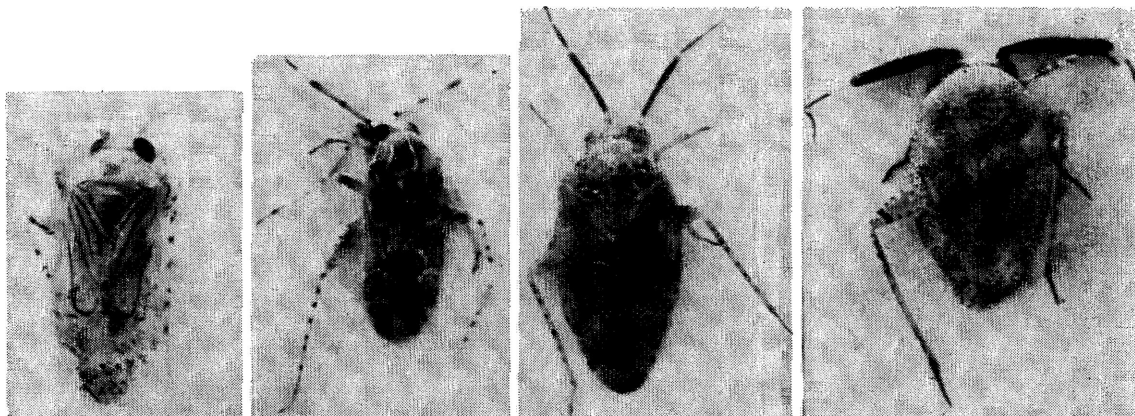


Fig. 54. From left: *Zinjolopus elegans* gen. et sp. n., *Z. albostrigatus* sp. n., *Yolvata nigricornis* sp. n. and *Indatractus pantherinus* gen. et sp. n.