

*O. martini* Rt.

Length ♂ 4 mm, ♀ 3.5 mm. Opaque. Pale ochraceous. Head and pronotum dark brown to black, in ♀ middle of head and basal margin of pronotum pale (Fig. 1 h). Eyes reddish grey. Antennae yellowish, 1st joint black. In ♂ base of scutellum sometimes infumed. Cuneus dark brown; membrane dark, veins slightly paler, lateral margin bordering cuneus pale. In ♂ under surface of pronotum embrowned. Legs pale, tibiae with very small setigerous dots.

Robust. ♂ nearly parallel-sided, ♀ ovate. Body 3.22 (♂) or 2.6 (♀) × as long as broad at base of pronotum. Ocular index 2.0—2.16 (♂) or 2.64 (♀). Proportions between antennal joints 6+30+26+12 (♂) or 8+34+29+11 (♀), 2nd joint about as long as basal width of pronotum. Body with yellowish or brownish hairs and adpressed silvery tomentum.

Male genitalia much as in *O. nymphias*, but right stylus and 2nd aedeagal process different (Fig. 2 d—e).

Range: North Africa.

Material studied. Algeria: Biskra, 2 ♂♂, 28.—30. IV. 1964, H. Eckerlein. Sudan: Kassala Prov., Suakin, 1 ♀, 5. XII. 1963, Linnavuori.

*O. nocturnus* sp. n.

Fig. 1 a. Length 3.75 mm. Opaque. Uniformly dark coffee brown. Head medially, indistinct median band on anterior part of pronotum and

scutellum slightly pale. Antennae yellowish, 1st joint black. Membrane dark, veins in apical part pale. Under surface of thorax with faint pale markings. Rostrum pale. Femora dark brown, tibiae and tarsi yellow-brown, tibiae with small dark setigerous dots.

Elongately pear-shaped, 3 × as long as broad at base of pronotum. Hair covering brown (silvery tomentum in the specimen studied apparently worn off). Head 0.7 × as broad as pronotum, in apical view broader than high (22.5:8), ocular index 2.4. Proportions between antennal joints 6:30:22:13, hair covering short and pale, 1st joint moderately thick, others filiform, 2nd a little shorter than basal width of pronotum (30:32). Rostrum extending a little beyond hind coxae. Pronotum 2.3 × as broad as long, lateral margins straight, basal margin curved, disk moderately convex, calli indistinct. Scutellum large. Elytra extending a little beyond apex of abdomen. Hair covering of venter long, dense, directed caudad. Hind femora incrassate, 1.19 × as long as basal width of pronotum, 4.1 × as long as broad. Tibial spines brownish, longer than cross-section of tibia, hair covering longish and dense.

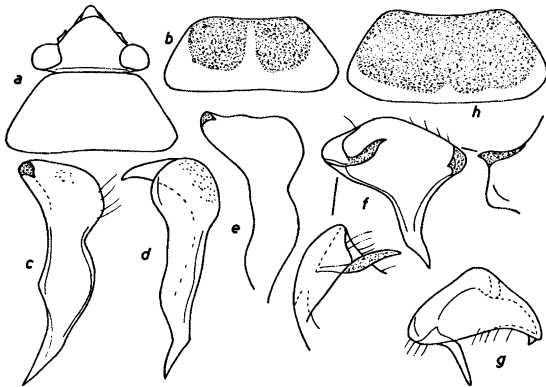


Fig. 1. *Orthotylus nocturnus* sp. n.: a head and pronotum. — *O. nymphias* sp. n.: b pronotum (♀); c—e right stylus; f left stylus; g same from above. — *O. martini* Rt.: h pronotum (♀). — Orig.

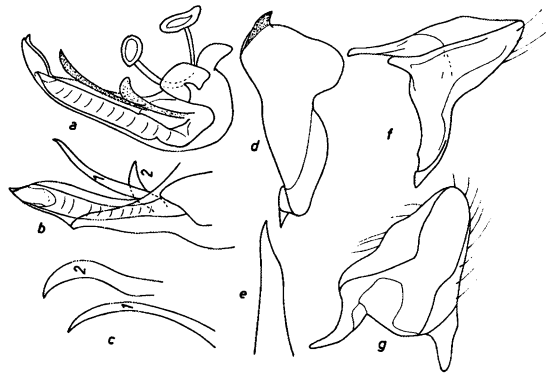


Fig. 2. *Orthotylus nymphias* sp. n.: a—b penis; c appendages of same. — *O. martini* Rt.: d right stylus, broad aspect (same as in Fig. 1 e); e second aedeagal appendage. — *Tuponia luniensis* sp. n.: f left stylus; g same from above. — Orig.