



Fig. 9. *Lygus alpicola* Pop. (from Kipopo): a spiculum; b apex of hypophysis of left stylus in broad aspect. — *L. suturellus* Pop.: c–d same. — *L. unguicularis* sp.n.: e spiculum; f right stylus; g apex of hypophysis of left stylus in broad aspect; h scutellum. — *L. brevicornis* sp.n.: i scutellum; j–l spiculum; m left stylus; n apex of hypophysis of same in broad aspect; o right stylus.

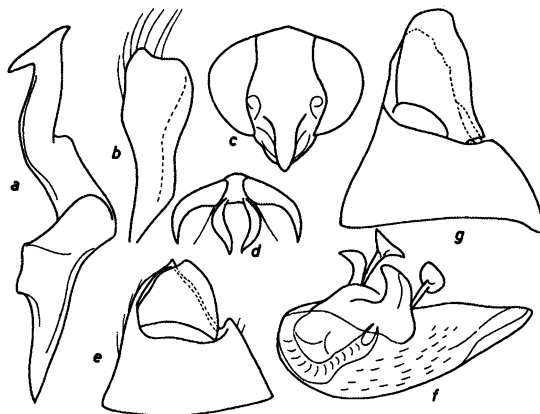


Fig. 10. *Nanniella flaviceps* sp.n.: a left stylus; b right stylus. — *Laurinia bathyllus* sp.n.: c head, apical view; d claws; e pygophore; f penis. — *L. fugax* Rt.: g pygophore.

Orthotylinae

Nanniella pallidiceps sp.n.

Length 3.25 mm. Shiny black. Vertex and upper part of frons largely dark yellowish brown. Eyes dark brown. 1st antennal joint (others absent) yellow. Cuneus, excluding basal margin, pale. Membrane brownish smoky, laterally pale. Legs yellow-brown. Hind femora with a longitudinal dark brown stripe on inner surface. Tibiae apically and 3rd tarsal joint black.

Body remarkably gracile, nearly 4 × as long as broad. Upper surface with dense, semi-erect longish pale grey hair covering. Head 0.74 × as broad as pronotum, in apical view 1.14 × as broad as high, base of vertex margined, eyes small, ocular index 2.0. Rostrum extending to hind coxae. Pronotum remarkably elongate. 1.43 × as broad as long (total length), lateral margins distinctly insinuated; collar distinct, broadish; disk convex, coarsely punctate, puncturing distinctly coarser than in *N. chalybaea*. Puncturing of scutellum and elytra also dense and coarse, mesocorium with impunctate apical patch, cuneus apically impunctate. Legs as in *N. chalybaea*. Male genitalia in Fig. 10 a–b. Right stylus without apical tooth.

Material studied: Zaire: Lubumbashi, 1 ♂ type, 12–19. IV. 1971, A. B. Stam.

The very gracile body distinguishes *N. pallidiceps* from all other species of the genus (body 3–3.5 × as long as broad, pronotum at least 1.5 × as broad as long) except from *N. gracilis* Lv. (the Sudan). The last-named is considerably bigger, length 3.5–3.75 mm, and has much longer legs with completely black tibiae. Of *N. reuteri* Pop. only the female sex is known. The females of this species are smaller, length 2.8 mm, and robuster than *N. pallidiceps*, the head and cuneus are blackish, the femora and tibiae pale are yellow, and the pronotal collar is indistinct. In *N. chalybaea* Rt. and *N. palustris* Lv. the lateral margins of the pronotum are straight etc.

Laurinia bathyllus sp.n.

Figs. 10 c and 13 f–g. Length 4.0–4.25 mm. Shiny reddish brown. Eyes dark brown. Antennae yellow-brown, 4th joint and basal parts of 3rd and 2nd joints darkened. Elytra with the same pattern as in *L. fugax*, clavus and corium reddish or reddish brown, costal margin and claval commissure narrowly dark; basal third of corium with oblique white band ex-