

and Shendi, some, 2. - 5. XI. 1962, Linnavuori. Host: *Aristida acutiflora*.

S. erinys sp.n.

1. Length 3 - 3.25 mm.

2. Colouring whitish. Upper surface with traces of fulvous pattern as in *lineatus*, but the fulvous bands much fainter and more irregular, the lateral bands of pronotum (Fig. 12 d) distinctly diverging caudad, much narrower than the intermediate pale bands. Development of brown pigment: at most membrane with faint brown irroration.

3. Head (Fig. 11 a - b, Fig. 12 b) more acuminate apically; tylus in profile less strongly sloping ventrad, its apical margin not vertical; ocular index 1.74 - 1.8 (σ), 2.5 - 2.7 (φ).

4. Antennae longer, 2nd joint 1.0 (σ) or 1.23 - 1.27 (φ) \times as long as basal width of pronotum.

5. Rostrum distinctly beyond hind coxae.

6. Male genitalia (Fig. 12 g, Fig. 13 f - i) much as in *aristidae*. Theca simple.

Material studied: Sudan, Northern Province, Ed Damer, 1 σ , type and some paratypes, 5. - 10. VII. 1961; Shendi, 1 paratype, 2. - 5. XI. 1962. Sudan, Kassala Province, Erkowit, some paratypes, 5. - 10. VII. 1961; 1962, Linnavuori. Types in my collection.

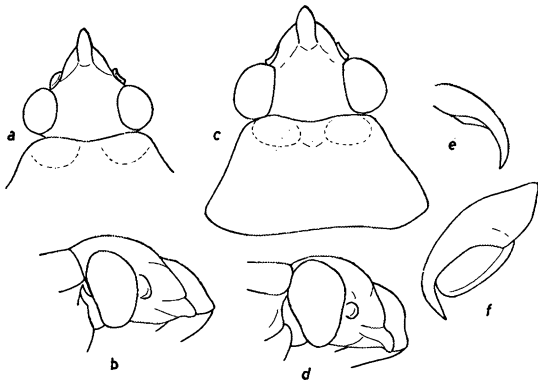


Fig. 11. *Stirophylus erinys* sp.n.: a head (σ) from above; b same in profile. — *S. aristidae* Wgn.: c - d same. — *S. lineatus* sp.n.: e claw. — *Taeniphorus hyalinus* Lv.: f same. — Orig.

S. lineatus sp.n.

1. Length 2.5 - 2.75 mm.

2. Colouring whitish, with distinct orange markings: head tinged with orangish on either side, only a narrow midline whitish. Pronotum (Fig. 12 e) with 4 parallel longitudinal orange lines at least as broad as the intermediate whitish bands, these bands continuing on to scutellum, forming there two distinct median bands and a triangular spot in either basal angle. Elytra with 3 parallel longitudinal orange bands, one in clavus, two in corium; commissural margin of clavus also narrowly orange, costal margin and cuneus tinged with same colour; the orange bands giving to the upper surface a striated appearance. Antennae and legs also with orangish tinge. 1st antennal joint with dilute red markings, sometimes also tibiae basally with traces of dilute red dots. Trend to development of dark pigment: pronotum with obscure brown irroration; median margin of cuneus and inner apical angle of corium with fuscous spots; membrane with dense and distinct dark brown irroration.

3. Head acuminate apically, apical margin of tylus in profile not vertical; ocular index 1.41 (σ) or 1.85 - 2.15 (φ).

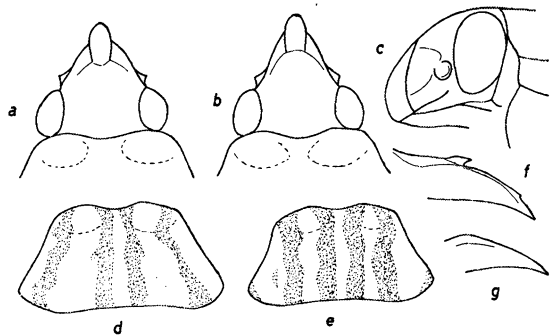


Fig. 12. *Stirophylus aristidae* Wgn.: a head (φ) from above. — *S. erinys* sp.n.: b same; d pattern of pronotum; g theca. — *S. lineatus* sp.n.: e pattern of pronotum; f theca. — *Taeniphorus hyalinus* Lv.: c head (φ) in profile. — Orig.