

Fig. 7. *Phytocoris eileithya* sp.n.: a head and pronotum; b left side of pygophore, dorsal aspect; c-d right stylus; e left stylus from side; f same from behind. — Orig.

*P. eileithya* sp.n.

Length 6.25 mm. Ground colouring whitish grey. Tylus (Fig. 7 a) with Y-shaped black median stripe, margins of lorae darkened; frons and vertex with a blackish,  $\pm$  vermiculate median band, more distinct apically, frons with 7 pairs of regular and distinct brown lateral arcs, vertex laterally largely embrowned. 1st antennal joint black, with some whitish spots, bristles pale; 2nd joint basally darker, apically yellowish brown, with a narrow whitish basal ring; other joints yellow-brown. Pronotum dirty reddish brown, with a faint, not contrasted whitish median line; basal margin narrowly whitish, irregularly bordered with dark brown. Scutellum dark yellowish brown, with basal angles and a median figure, consisting of a larger basal spot and two faint median longitudinal stripes, darker brown. Elytra whitish grey, with rather dense, dark irroration, Cu dark brown; membrane milky, with fine dark irroration; apico-lateral margin with two larger dark spots; veins pale. Propleurae with two longitudinal black stripes. Meso- and metathorax largely blackish brown. Femora heavily marked with blackish, the dark colouring appearing to consist of longitudinal stripes. Tibiae with dark spots, the pale colouring dominant, the dark markings not concentrated into distinct rings, spines pale, tarsi embrowned.

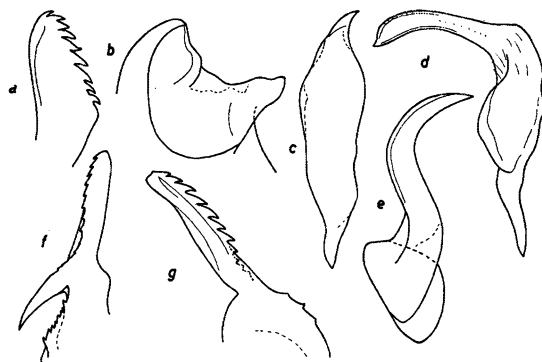


Fig. 8. *Phytocoris eileithya* sp.n.: a comb-shaped spiculum of vesica. — *P. schaeuffelei* Wgn.: f-g same; b pygophore, dorsal aspect; c right stylus; d-e left stylus. — Orig.

Body gracile, about  $4.6 \times$  as long as broad at base of pronotum. Hair covering of upper surface consisting of both pale and dark hairs, the latter more erect. Head in profile longer than high (18:15), without a deep sulcus between frons and tylus, in apical view slightly broader than high (24:22); ocular index 1.7 ( $\sigma$ ). Antennae remarkably long and gracile; proportions between joints 38:73:35:?, 1st joint gracile,  $1.6 \times$  as long as diatone, slightly longer than basal width of pronotum (38:36); 2nd joint twice as long as basal width of pronotum. Rostrum slightly beyond hind coxae. Pronotum narrow and convex,  $1.5 \times$  as broad as head,  $1.64 \times$  as broad as long; lateral and basal margins shallowly insinuated. Elytra extending well beyond abdomen. Male genitalia in Fig. 7 b-f and Fig. 8 a.

Material studied: U.S.S.R., Armenia, Migryi na Arakse, 1  $\sigma$ , type (in my collection), 5. VII. 1931, Rjabov.

Very near to *P. schaeuffelei* Wgn. (Iran), but differing in the more contrasted colour pattern of head and pronotum, the much longer antennae, and the male genitalia (lateral tubercle of pygophore much smaller and comb-shaped spiculum of vesica broader). *P. schaeuffelei*: ocular index 1.43-1.46 ( $\sigma$ ); 1st antennal joint  $1.21 - 1.22 \times$  as long as diatone,  $0.7 \times$  as long as basal