

- 12 (11) Length ♂ 3.75–4.25 mm., ♀ f. brach. 2.75 mm. (according to WAGNER & WEBER op. cit. ♂ 3.3–3.4 mm.). Darker species, with dense dark dotting. 3<sup>rd</sup> joint of hind tarsi only slightly shorter than 2<sup>nd</sup>. Vesica (Fig. 3 a–b) broader and more strongly curved apically . . . . .  
 . . . . . *atomosum* (Rt.) (Pontomediterranean)

*Compsidolon alcmena* n. sp. (Fig. 1)

Length 4.25 mm. Pale greyish ochraceous. Head pale yellow-brown, tylus and the adjacent parts of genae somewhat embrowned. Frons with traces of pale brownish lateral arcs, vertex with a triangular fuscous spot at median margins of eyes on either side. Eyes dark brown. 1<sup>st</sup> antennal joints blackish, other joints yellow-brown. Anterior part of pronotum yellow-brownish, basal part pale greyish, with faint and sparse dark brown dots. Scutellum pale yellow-brown, base tinged with orange, apical part with faint small brown spots. Elytra pale greyish, with rather dense and uniform dark brown dotting; cuneus with pale reddish tinge, base whitish and immaculate; membrane smoky, a hyaline spot at apex of cuneus, a transverse darker spot in lateral margin, also cells more distinctly infumed apically, veins pale. Thorax medially and basally embrowned. Femora yellow-brown, with dense dark irroration. Tibiae pale ochraceous, with distinct black spots, spines brownish. Tarsi basally yellowish brown, apically darker.

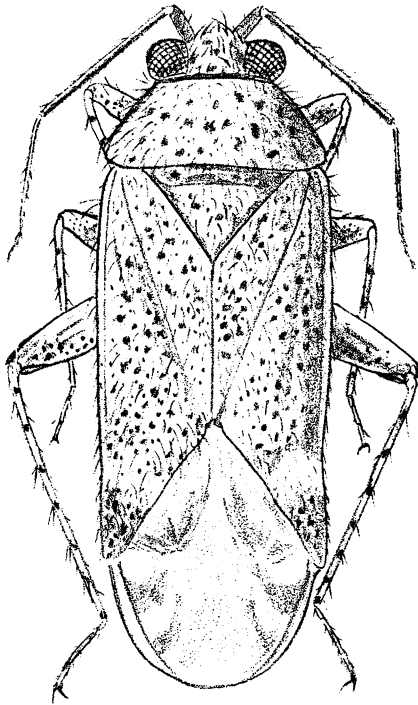


Fig. 1: *Compsidolon alcmena* n. sp. — Drawn by FR. HELLER.