

Easily recognized by the uniformly dark colouring, the shape of the head and the gracile antennae.

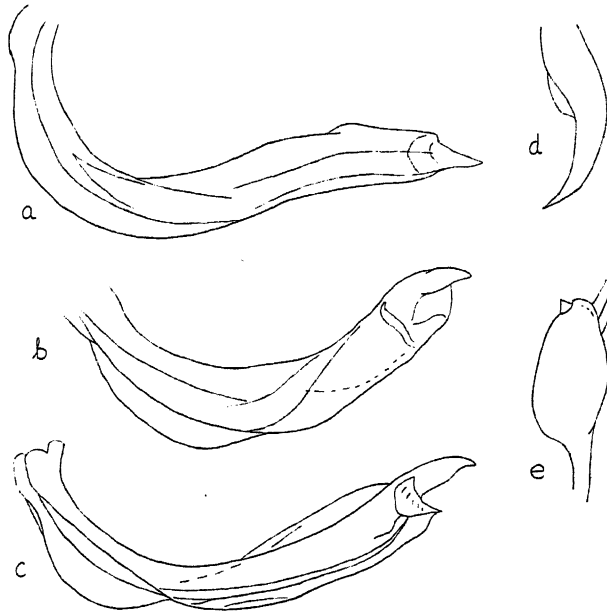


Fig. 2. *Sthenaropsis obscurus* POPP.: a vesica; e right stylus. — *S. gracilicornis* n.sp.: b vesica; d claw. — *S. schachrudicus* n.sp.: c vesica. — Orig.

3. *S. schachrudicus* n.sp.

♂ 3.5–3.75 mm., ♀ 3 mm. Less shining. Colouring as in *gracilicornis*, but still darker blackish. Antennae darker ochraceous, apically even dark brown. Legs somewhat darker, tibial spines whitish.

♂ elongate, parallel-sided, $2.55\times$ as long as broad, ♀ ovate, twice as long as broad. Head obliquely vertical, about $0.8\times$ as broad as basal width of pronotum, $1.5\times$ as broad as high, with upper margin straight or slightly convex in apical view; vertex $2.17-2.37\times$ as broad as eye. Proportions between the antennal joints 5+20+10+9; 2nd joint remarkably short, $0.67\times$ as long as basal width of pronotum, thick, greatest width $0.06-0.07$ mm. Hair covering of upper surface darker than in *gracilicornis*. Male genitalia: Left stylus (fig. 1 c and f) much as in *obscurus*, but hypophysis somewhat longer. Vesica as in fig. 2 c. Right stylus as in the other species.

Material studied: Iran: Schachrud, 1 ♂ (type, in coll. of the author) and 10 paratypes (idem, Mus. Helsinki and Mus. Leningrad), 12–13. V. 1914, KIRITSHENKO.

Easily recognized by the dark colouring and the short 2nd antennal joint.