

Fig. 9 - *Microoculis nilgiriensis* n.sp., female, holotype.

Type species of genus: *Microoculis nilgiriensis* n.sp.

This genus differs from others in the tribe by the very small eyes, placed slightly beyond the middle of head.

Microoculis nilgiriensis, n. sp.

(Figs. 9 - 12)

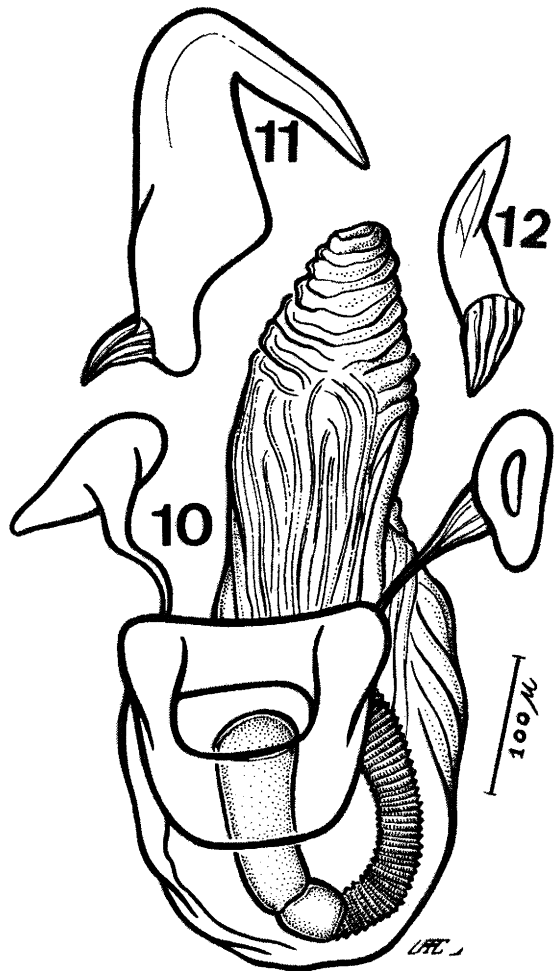
Characterized by its color and by the structure of the male genitalia.

Male: Length 3.4 mm, width 1.0 mm. **Head:** Length 0.4 mm, width 4.0 mm, vertex 0.28 mm. **Antenna:** Segment I, length 0.3 mm; II, 1.2 mm; III, 0.9 mm; IV, 0.5 mm. **Pronotum:** Length 0.4 mm, width at base 0.8 mm. **Cuneus:** Length 0.56 mm, width at base 0.20 mm (holotype).

General coloration pale greenish with brown to black areas; eyes brown, segment I of antenna dark brown to black at base and apex or the whole segment (paler at middle); head, pronotum and scutellum citrine to lutescent; hemelytra pale greenish, apex of embolium, apex of cuneus greenish; membrane pale fuscous, nervures fuscous. Underside of body citrine to lutescent.

Genitalia: Penis (Fig. 10) of the Dicyphini type, without sclerotized spiculi, theca reduced. Left paramere (Fig. 11) falciform, enlarged sub-basally. Right paramere (Fig. 12) small, elongate.

Female: Similar to male in size, general aspect and coloration.



Microoculis nilgiriensis n.sp.: Fig. 10 - Penis; Fig. 11 - Left paramere; Fig. 12 - Right paramere.