

*Peritropisca* n. gen.

Cylapinae, Fulviini. Body elongate oval, shagrinéd, smooth, with pale adpressed hairs and scale-like black hairs. Head horizontal, vertex immarginate, depressed at middle, eyes slightly removed from pronotum, reaching the gula inferiorly, clypeus compressed, jugum, lorum, gena and gula long, rostrum reaching beyond posterior coxae (somewhat mutilated on holotype); antenna with segment I and II thicker than others, segments III and IV very slender, with long hairs.

Pronotum shagrinéd, collar present and very narrow, calli projected upwards as two long and pointed tubercles, lateral margins carinated and explanated, sinuated at middle, posterior margin almost straight with three tubercular excrescences, lateral angles expanded and flattened; mesoscutum exposed; scutellum small, slightly convex (fig. 78).

Hemelytra with embolium wide at basal third, flattened, cuneal fracture distinct, cuneus almost as long as wide at base, membrane apparently uniareolate. Underside of body with anterior coxae and femora enlarged, ostiolar peritreme slender and oblique, legs of medium size, tibiae with short hairs, tarsi with three segments, claws long and slender of the Cylapini type.

Type species of genus: *Peritropisca tuberculata* n. sp.

This genus differs from *Peritropis* Uhler, 1891 by the long tuberculate calli, by the presence of black scale-like hairs and by the three segmented tarsi.

*Peritropisca bituberculata* n. sp.

(Figs. 78-82)

Characterized by the coloration of the body and by its dimensions.

*Male*: Length 4.4 mm, width 1.8 mm. *Head*: Length 0.6 mm, width 0.6 mm, vertex 0.24 mm.

*Antenna*: Segment I, length 0.6 mm; II, 1.6 mm; III, 0.4 mm; IV, 0.5 mm. *Pronotum*: Length 0.7 mm, width at base 1.4 mm. *Cuneus*: Length 0.40 mm, width at base 0.36 mm.

General coloration brown; body with pale semiadpressed hairs and black scale-like hairs; spots on vertex, a longitudinal fascia at middle of disc, enlarged on collar and posteriorly, cuneal fracture pale; embolium with small obsolete pale

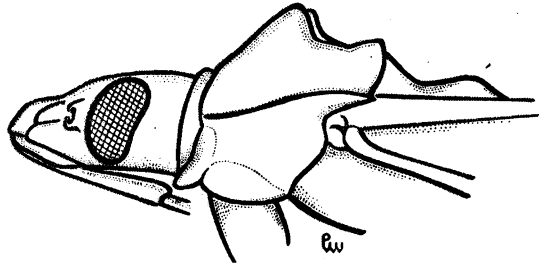


Fig. 78 – *Peritropisca bituberculata* n. sp., head and pronotum seen from side.

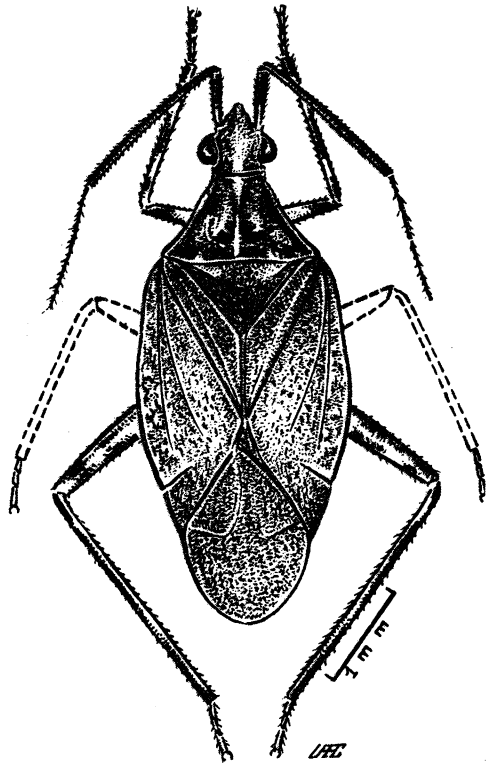


Fig. 79 – *Peritropisca bituberculata* n. sp., holotype.

spots, membrane fuscous. Underside of body brown to castaneous, mesosternum black, coxae I black, pale apically, coxae II and III pale, femora brown with pale transversal fasciae, tibiae pale to brown.

Morphological characters as mentioned for genus.

*Genitalia*: Penis (fig. 80) elongate, with secondary gonopore showing small tubercles laterally. Left paramere (fig. 81) curved, enlarged at middle with a finger-like tubercle apically. Right paramere (fig. 82) small, pointed apically.