

VIII.90, Museum Zoologicum Helsingfors, n° 9987; 29 males and females: NEW GUINEA: Nw, Oransbari, S. of Manotwari, 3 m, 12.II.1963, R. Straatman; Ne, Ambunti, Sepik R., 200 m, 5.V. 1963, R. Straatman, light trap; Neth, Bodem, 100 m, 11 km Se of Oerberfaren, 7-17.VII.1959, T. C. Maa; Neth, Wisselmeron, 1700 m, Waghete, Figi L., 17.VIII.1955, J. L. Gressitt; Ne, Yaibos, 2030, 2180 m, 11.VI.1963, J. Sedlacek; Se, Popondetta, 25 m, VI.1966, Shanahan-Lippert, light trap; Se, Mamai Pltn., E. of Port Glasgow, 150 m, 5.II.1965, R. Straatman, light trap; Papua, Kokoda-Pitoki, 450 m, 24.III.1956, J. L. Gressitt; Owen Stanley Range Goilala: Loloipa, XIII.11-20.1957, W. W. Brandt; Ne, Umboi I., 1 km N. Awelkom, 600 m, 21-28.II.1967, G. A. Samuelson, light trap; Nw, Nabire, S. Geelvink Bay, 0-30 m, 29.VII.1962, J. L. Gressitt, Malaise trap; Neth, Hollandia-Binnen, 100 m, 23.XI.1958, J. L. Gressitt, light trap; Wau, 1200 m, 10.IX.1964, Malaise trap, J. & M. Sedlacek; Id. 400 ft., 22.X.1965, D. H. A. C. & A. H. Kistne Dield, n° 1190; Nw, Wamena, Baliem V., 14-15.II.1960, T. C. Maa; Neth, Biak I. Se, 15 m, 29.VII.1955, light trap; J. L. Gressitt; Ne, Tsenga, 1200 m, Upper Jimmi V., 15.VII.1955; Central Mts. Archbold Lake, 760 m, 26.XI.3.XII. 1961, light trap, S. Quate & L. Quate; NEW BRITAIN: Vunabakan, 180 m, 10 km E. of Keravat, 16-20.XI.1959, T. C. Maa; NEW IRELAND: Schleinitz Mts., Lelet Plateau. X.1959, W. W. Brandt.

This species differs from others by the two longitudinal fasciae running over pronotum and vertex.

*Peritropis annulicornis* Poppius, 1909

(Figs. 70-73)

*Peritropis (Meivius) annulicornis* Poppius, Acta Soc. Sci. Fenn., 37 (4): 170.

*Peritropis annulicornis* Carvalho, Arq. Mus. Nac. R. Jan., 44: 21, 1957.

Characterized by the coloration of the antenna and by the structure of the male genitalia.

*Male*: Length 2.3-3.1 mm, width 0.9-1.2 mm. *Head*: Length 0.3-0.4 mm, width 0.5-0.6 mm, vertex 0.20 mm. *Antenna*: Segment I, length 0.3 mm; II, 0.7 mm; III, 0.2 mm; IV, 0.2 mm. *Pronotum*: Length 0.3 mm, width at base 0.8 mm. *Cuneus*: Length 0.18 mm, width at base 0.18 mm.

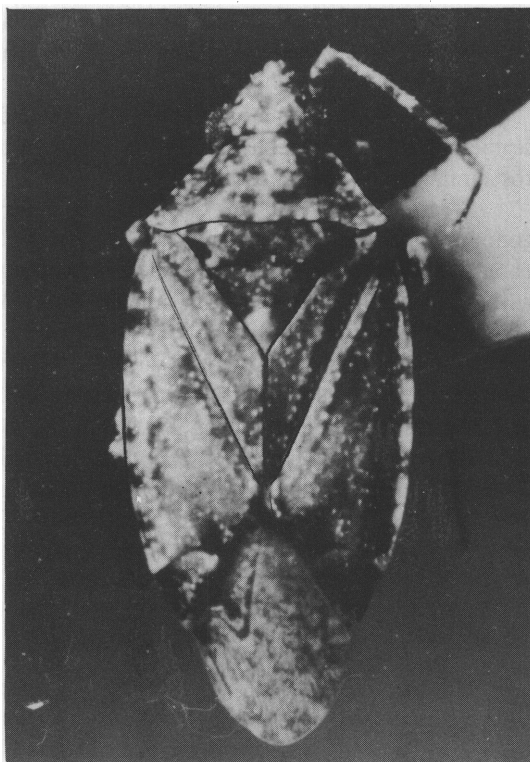


Fig. 70 – *Peritropis annulicornis* Poppius, female.

General coloration brown sprinkled with small pale spots; head pale with dark brown spots on jugum, lorum and above antennal peduncle, vertex with a reddish spot along median sulcus, eyes brown; antennae brown, segment I with two or three pale spots or rings; segment II with a median pale ring reaching around the segment and five to six smaller ones mostly on upper portion, segments III-IV brown.

Pronotum brown sprinkled with small pale spots mainly on the margins and upper median portion of calli; mesoscutum and scutellum dark brown, unicolorous or with small pale spots, the apical portion always whitish (a semi-lunar spot).

Hemelytra brown, sprinkled with small pale spots mostly visible and regular at embolium, apical portion of corium and embolium pale, endocorium at middle and apically with somewhat darker brown spots, cuneus dark brown with internal angle and apical portion pale, membrane fuscous, marmorated with pale.

Underside of body brown, coxae, trochanters and base of femora pale, apices of femora and bases of tibiae sprinkled with reddish and white,