

Fulvius variegatus Poppius, 1909

(Figs. 66-69, 90)

Fulvius variegatus Poppius, Acta Soc. Sci. Fenn. 27 (4): 31, 38; Id. Bergroth Ann. Soc. Ent. Belg. 60: 77, 1920; Id. Carvalho, Arq. Mus. Nac. R. Jan. 44: 19, 1957.

Fulvius peregrinator Kirkaldy, Proc. Hawaii: Ent. Soc. 2: 120, 1910; Id. Willians, Handb. Ins. Inv. Hawaii: 103, 1931; Id. Zimmerman, Ins. Hawaii, 3: 197, fig. 83, 1948.

Fulvius buxtoni Knight, Ins. Samoa 2, Hem. 5: 203, 1935.

Characterized by its coloration and by the structure of male genitalia.

Female: Length 3.2 mm, width 0.9 mm. **Head:** Length 0.5 mm, width 0.5 mm, vertex 0.24 mm. **Antenna:** Segment I, length 0.3 mm; II, 0.8 mm; III, 0.4 mm; IV, broken. **Pronotum:** Length 0.4 mm, width 0.9 mm. **Cuneus:** Length 0.28 mm, width 0.24 mm (lectotype).

General coloration brown to dark brown; three longitudinal stripes on head and pronotum, basal half of corium and embolium and basal outer

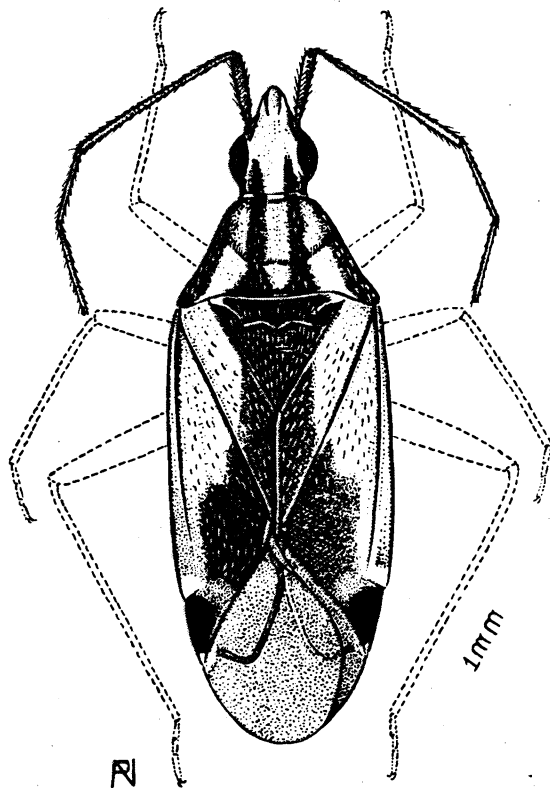
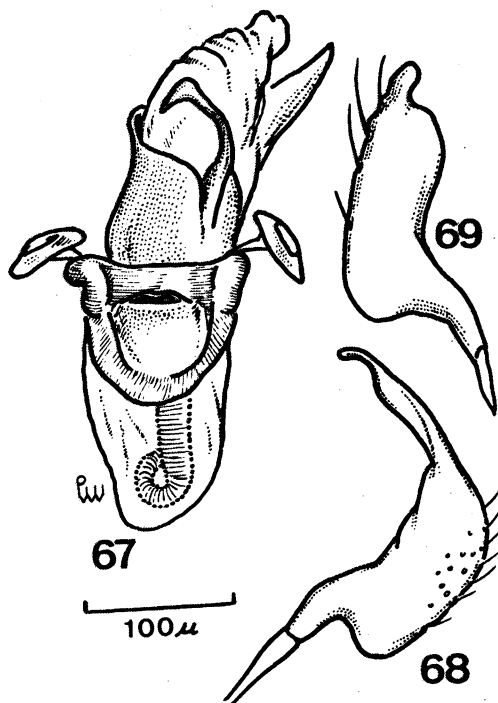


Fig. 66 — *Fulvius variegatus* Poppius, male.

portion of clavus, extreme apex of clavus and cuneus pale yellow; a triangular spot on apex of embolium white; first and second antennal segments, apices of coxae, trochanters, apices of femora, and tibiae paler; femora with reddish tinge at apices.

Rostrum reaching second visible abdominal segment.

Genitalia: Penis (fig. 66) small of the Fulviini type. Left paramere (fig. 67) excavated ventrally with pointed apex. Right paramere (fig. 68) small, simple. Pygophore as fig. 90.



Fulvius variegatus Poppius — Fig. 67: Penis; fig. 68: left paramere; fig. 69: right paramere.

Male: Length 2.6 mm, width 0.4 mm. **Head:** Length 0.3 mm, width 0.4 mm, vertex 0.24 mm. **Antenna:** Segment I, length 0.3 mm; II, 0.8 mm; III, 0.5 mm; IV, broken. **Pronotum:** Length 0.4 mm, width 0.8 mm. **Cuneus:** Length 0.24 mm, width 0.24 mm, with coloration and general aspect as female.

Geographical distribution: Papua New Guinea, Hawaii; Samoa; Carolines; Palau Is; Yap Is.; Truk Is.; Ponape Is.; Kusaie Is.; New Britain; New Ireland.

Specimens studied: Female, lectotype (new designation), New Guinea, Ighiberei, Loria, VII-