

40 km N of Baliem Val., 1300 m, 5-11.XI.1961, light trap. S. Quate & L. Quate; Ne, Adelbert Mts: Wanuma, 800-1000 m, 25.X.1958, J. L. Gressitt, light trap; Neth, Hollandia-Binnen, 25 m, 16.X.1957; NEW IRELAND: Sn, Ridge above "Camp Bishop", 16 km sup Kait R. 250-750 m, 14.VII.1956, J. L. Gressitt.

The holotype of this species is said to be one female collected at Sifora, Mentawai Is., in the "Museo Civico de Historia Natural Giacomo Doria", Genova. This specimen was not seen by us and our assignment of the specimens on hand to this species is based on Poppius's description and key (1909). Some specimens in the series do show, however, a pale portion at apex of segment II of antenna.

Fulvius pallidus Poppius, 1909

(Figs. 54-57, 93)

Fulvius pallidus Poppius, Acta Soc. Sci. Fenn. 37 (4): 29, 32, fig. 9; Id. Bergroth, Ann. Soc. Ent. Belg. 60: 76, 1920; Id. Carvalho Arq. Mus. Nac. R. Jan. 44: 13, 1957 (syn. nov.).

Fulvius concolor Carvalho, Ins. Micronesia, 7 (1): 7, fig., 1956 (syn. nov.).

Characterized by the coloration of the body and by the structure of the male genitalia.

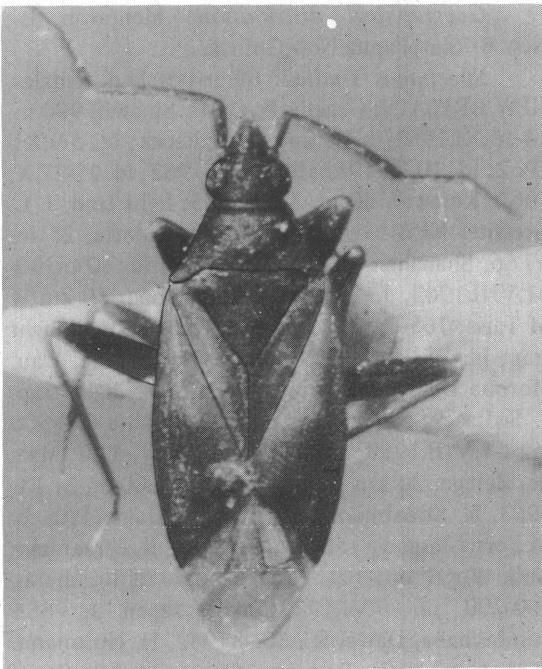


Fig. 54 – *Fulvius pallidus* Poppius, female.

Male: Length 2.8 mm, width 1.0 mm. **Head:** Length 0.4 mm, width 0.4 mm, vertex 0.24 mm. **Antenna:** Segment I, length 0.2 mm; II, 0.8 mm; III, broken; IV, broken. **Pronotum:** Length 0.3 mm, width 0.8 mm. **Cuneus:** Length 0.24 mm, width 0.16 mm.

General coloration light castaneous; posterior portion of vertex and basal portion of hemelytra lighter, tending to pale yellow; antenna unicolorous castaneous; membrane fuscous. Underside of body castaneous, coxae pale, femora brown, tibiae light castaneous.

Rostrum reaching the fifth abdominal segment; female with abdomen normal, terebra horizontal; pygophore large, slightly asymmetric, genital opening terminal, parameres characteristic.

Genitalia: Penis (fig. 55) of the Fulviini type, with membranous lobes and two sclerotized tooth or points. Left paramere (fig. 56) with a recurved apex. Right paramere (fig. 57) tapering to apex. Pygophore as fig. 93.

Female: Length 2.9 mm, width 0.9 mm. **Head:** Length 0.3 mm, width 0.4 mm, vertex 0.24 mm. **Antenna:** Segment I, length 0.2 mm, II, 0.6 mm; III, 0.7 mm; IV, broken. **Pronotum:** Length 0.3 mm, width 0.8 mm. **Cuneus:** Length 0.32 mm, width 0.20 mm.

Geographical distribution: Papua New Guinea, Caroline Is. (Palau, Yap, Ponape).

Specimens studied: holotype, male, *Fulvius brevipilis* Poppius, New Guinea, Friedrich-Wilhelmshafen, 1896, Biró, National Museum Natural History Budapest; 25 males and females, NEW GUINEA: West, Hollandia, 0-300 m, 22.XII.1961-2.I.1962, L. W. Quate; Neth, Biak I: Mangrowawa, 50-100 m, 30.X.1959, T. C. Maa; Nw, Waris, S. of Hollandia, 16-18.VII.1959, T. C. Maa; Ne, Morobe Dist. Wau, 3600' 11.IX.1971, W. C. Gagne; Nw, Oransbari, S. of Manokwari, 3 m, 12.II.1963, R. Straatman; Id. 10.II.1963; Vogelkop, Kebar Val, W of Manokwari, 550 m, 4-31.I.1962, S. Quate & L. Quate; Neth, Bodem, 10-17.VII.1959, T. C. Maa; Papua, Ne of Port Moresby, 150 m, Bisianumu, 19.VI.1957, D. Elmo Hardy; Kokoda-Pitoki, 400 m, 23.II.1956, J. L. Gressitt; Ne, Ambunti, Sepik R., 150 m, 4.V.1963, R. Straatman, light trap; Neth, Eramboe, 80 km, ex. Merauke, 29.I.1960, T. C. Maa; Larat, F. Muir, Dcbr 1907; Finschhafen, N. G. 4.44, F. E. Skinner.