

Fig. 11 – *Trichofulvius fasciatus* Poppius, male.

III, 0.2 mm; IV, 0.2 mm. *Pronotum*: Length 0.3 mm, width at base 0.7 mm. *Cuneus*: Length 0.28 mm, width at base 0.24 mm.

General coloration pale yellow with brown markings; upper surface with numerous small roundish spots; vertex and area of calli brown; antenna pale, segment I dark basally and pale with reddish tinge apically, segment II infuscate to apex; mesoscutum, scutellum cuneus and a transverse fascia at middle of hemelytra dark brown; membrane fuscous.

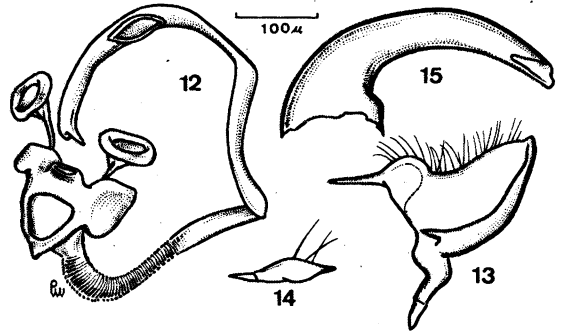
Morphological characters as mentioned for genus.

*Genitalia*: Penis (fig. 12) of the Phylini type, aedeagus with a subapical secondary gonopore and somewhat branched apex. Left paramere (fig. 13) compact, with two like projections and densely pilose. Right paramere (fig. 14), very small, simple. Theca (fig. 15).

*Female*: Unknown.

*Geographical distribution*: Papua New Guinea.

*Specimens studied*: male, West NEW GUINEA, Vogelkop, Kebar Val., W of Manokwari, 550 m, 4.31.I.1962, S. Quate e L. Quate col., in



*Trichofulvius fasciatus* Poppius – Fig. 12: Penis; fig. 13: left paramere; fig. 14: right paramere; fig. 15: external theca.

the collection of the Bernice P. Bishop Museum, Honolulu, Hawaii.

This species is easily recognized by the roundish brown spots of the body and by the transverse fascia on hemelytra. The cotypes are said to be in Genova and not available for study since the local Museum do not communicate type material.

#### *Trichofulvius zonatus* Bergroth, 1920

(Figs. 16-20)

*Trichofulvius zonatus* Bergroth, Ann. Soc. Ent. Belg., 60: 78; id. Carvalho, Arq. Mus. Nac. R. Jan., 44: 33, 1957.

Characterized by the coloration of the hemelytra and by the structure of male genitalia.

*Male*: Length 2.3 mm, width 0.8 mm. *Head*: Length 0.2 mm, width 0.4 mm, vertex 0.24 mm. *Antenna*: Segment I, length 0.3 mm; II, 1.0 mm; III, 1.0 mm; IV, 0.6 mm. *Pronotum*: Length 0.3 mm, width at base 0.8 mm. *Cuneus*: Length 0.32 mm, width at base 0.28 mm.

General coloration brown with pale yellow areas; eyes brown with reddish tinge in some specimens, segments III-IV of antenna pale; head, pronotum and scutellum dark brown to castaneous, hemelytra pale with basal portion of clavus and median transverse fascia on corium including the apical third of clavus reaching the apex along commissure until base of cuneus brown, the pale areas of hemelytra (middle portion of clavus and roundish spot at apex of corium) well marked, cuneus dark brown, membrane fuscous. Underside of body brown, coxae towards apices, trochanters and bases of femora pale, tibiae pale.