

of Sierra Nahuelbuta, elev. 1200 m, Rossh & Michelbacher col.; Chile, Marimenuco, Malluco, 1.100 m, Nov. 16, 59.

25. **Orthotylus divergens** Reuter, 1907 — Jamaica. Ofv. F. Vet. Soc. Forh. 49 (5): 15.

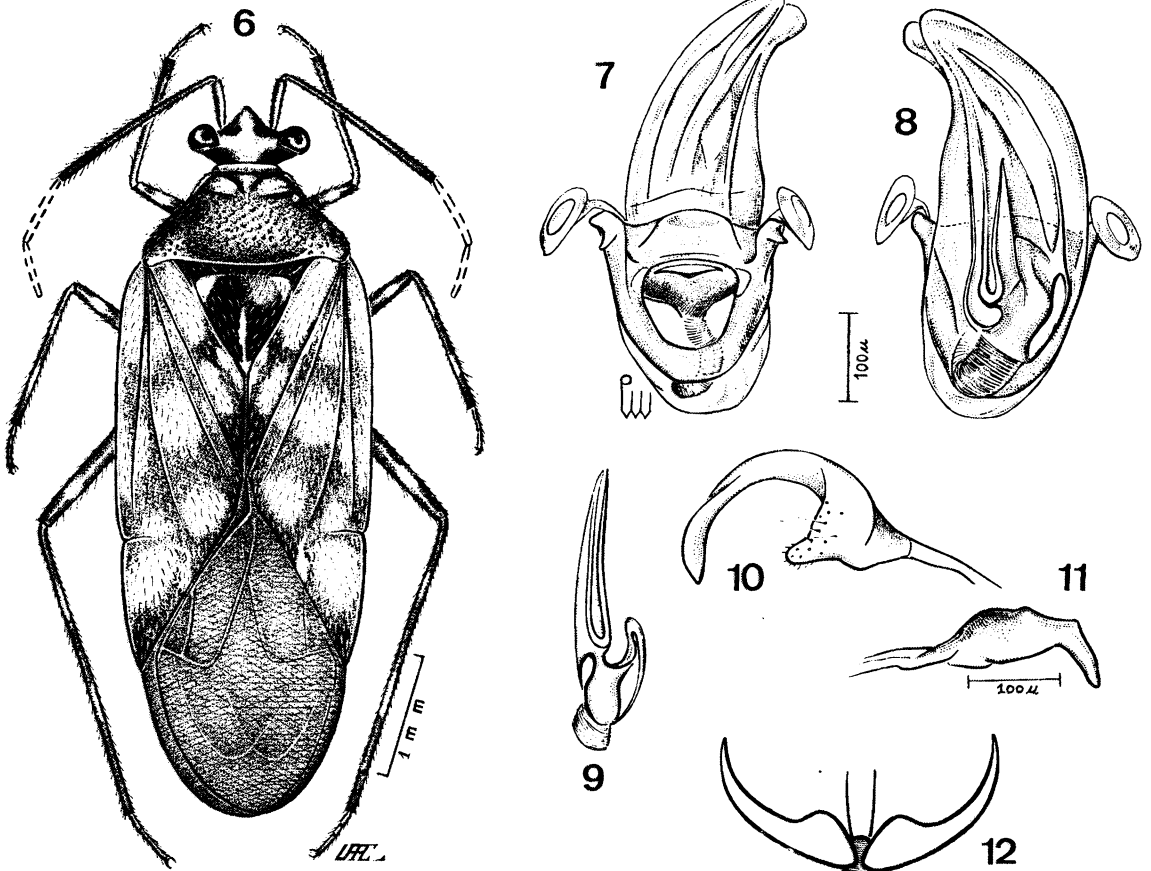
This species belongs to the genus *Parthenicus* Reuter, 1876. The holotype which is in the collection of the California Academy of Sciences, San Francisco is pale in color with the cuneus and base of the hemelytra reddish. The hind legs have reddish orange spots. The vestiture has been rubbed off.

26. **Psallus atomophorus** Reuter, 1907 — Jamaica. Ofv. F. Vet. Soc. Forh. 49 (5): 22.

This species also belongs to the genus *Parthenicus* Reuter, 1876. It is pale and spotted over the body and legs with minute brown dots. The antenna is pale with black dots.

27. **Orthotylus compsus** Reuter, 1907 — Jamaica. Ofv. F. Vet. Soc. Forh. 49 (5): 14.

This species belongs to genus *Saileria* Hsiao, 1945, being very near or identical with *Saileria bella* (Van Duzee, 1916) from



*Idiomiris magellanicus* China: Fig. 6 — male, compared with type; Figs. 7, 8 — penis; Fig. 9 — secondary gonopore; Fig. 10 — left paramere; Fig. 11 — right paramere; Fig. 12 — claw and hair-like paramodia.