

(1.18 mm, 1.10-1.26 mm); III, 0.84 mm (0.88 mm, 0.82-0.96 mm); IV, 0.26 mm (0.25 mm, 0.24-0.26 mm). Pronotal length, 0.76 (0.70 mm, 0.64-0.76 mm); width, 1.42 mm (1.42 mm, 1.38-1.48 mm). Cuneal length, 0.78 mm (0.80 mm, 0.76-0.88 mm); width, 0.54 mm, (0.56 mm, 0.54-0.60 mm).

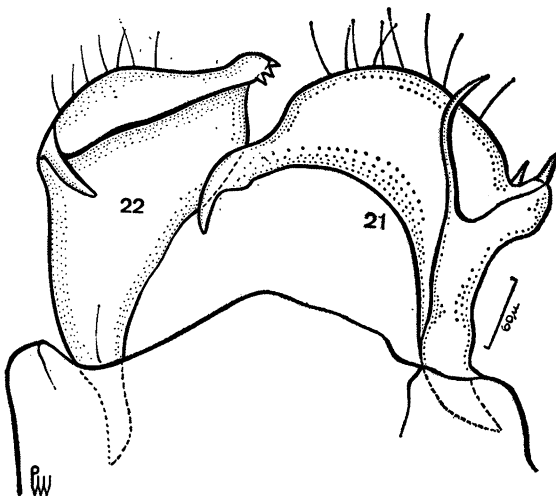
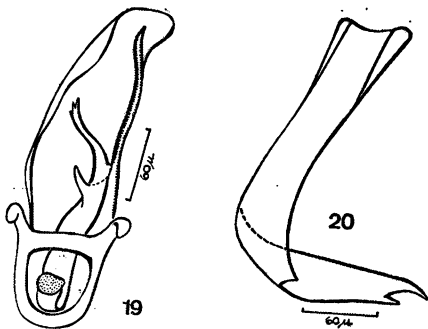
General coloration yellow to cinnamonous with brown areas; head pale yellow to citrine or light brown; antenna pale yellow becoming fuscous towards apex, segments III and IV fuscous; scutellum, clavus and endocorium of some specimens brown to cinnamonous, in others, same color as pronotum, cuneus lighter, to pale yellow; membrane dark fuscous, pale along cuneal margin. Underside pale yellow, fuscous to brown laterally; coxae and

femora pale yellow, tibiae castaneous, pale yellow at base; underside of apical portion of hind femur with characteristic small dark spots.

Upperside of body covered by fine erect hairs intermixed with scales, the latter appearing golden or black under incident light. Rostrum reaching apices of middle coxae.

Genitalia: Penis (Figs. 19-20) simple with vesica sclerotized at apex. Left paramere (Fig 21) curved with processes as shown in figure. Right paramere (Fig. 22) broadened apically with narrow recurved process and toothlike structures at apex.

HOLOTYPE: male, Nova Teutonia, Santa Catarina, Brazil, 27°11'N, 52°23'W, October, 1970, Fritz Plaumann. Deposited in the *J. C. M. Carvalho collection*, Rio de Janeiro. **PARATYPES:** 3 males, same data as holotype. Deposited in the *J. C. Schaffner collection*, College Station, Texas.



Melanotrichus aureopubescentis n. sp. Fig. 19 — penis; fig. 20 — sclerotized apex of vesica; fig. 21 — left paramere; fig. 22 — right paramere.

Melanotrichus brasiliensis n. sp.

(Figs. 23-26)

Characterized by its color, dimensions and structure of the male genitalia.

MALE (measurements taken from 6 specimens; those of holotype given first followed in parenthesis by average and ranges): Length, 3.76 mm (3.70 mm, 3.54-3.76 mm); width, 1.44 mm (1.36 mm, 1.28-1.48 mm). Head length, 0.26 mm (0.27 mm, 0.26-0.30 mm); head width through eyes, 0.80 mm (0.81 mm, 0.78-0.84 mm); vertex width, 0.42 mm (0.42 mm, 0.42-0.44 mm). Length of antennal segment I, 0.26 mm (0.27 mm, 0.26-0.28 mm); II, 1.06 mm (1.06 mm, 1.00-1.14 mm); III, 0.70 mm (0.73 mm, 0.62-0.94 mm); IV, 0.32 (0.33 mm, 0.32-0.36 mm). Pronotal length, 0.54 mm (0.56 mm, 0.54-0.60 mm); width, 1.22 mm