

segment; segments III and IV slender, vestiture similar to that of segment II.

Pronotum smooth to lightly rugulose, trapezoidal in shape; calli obsolete; lateral margins weakly angulate; posterior corners rounded; posterior margin straight; vestiture consisting of scales and elongate semierect or erect bristlike hairs; mesoscutum partially exposed; scutellum flat to slightly convex, apex acute; corium smooth, veins obsolete; embolium flat, widened or undifferentiated from exocorium at apex in some species; cuneus varying from slightly longer than wide to over 1 1/2 times longer than wide, vestiture similar to that on pronotum; membrane long and fuscous. Pleural and sternal areas of thorax almost devoid of vestiture; abdomen with decumbent hairs only; legs long; tibiae with longitudinal rows of minute corrugations, spines light and longer than diameter of tibia; claws of orthotyline type, arolia convergent apically.

TYPE SPECIES OF GENUS, *Ceratocapsella longicuneata* n. sp.

This genus resembles *Ceratocapsus* in general aspect but can be easily recognized from it by having antennal segments III and IV more slender than II and having the pronotum and hemelytra smooth instead of punctate as in the case of some *Ceratocapsus*. It more closely resembles the genus *Melanotrichus* but can be differentiated from it by having a depressed area on the vertex and by the presence of the long bristle like hairs.

***Ceratocapsella longicuneata* n. sp.**

Figs. 1-3)

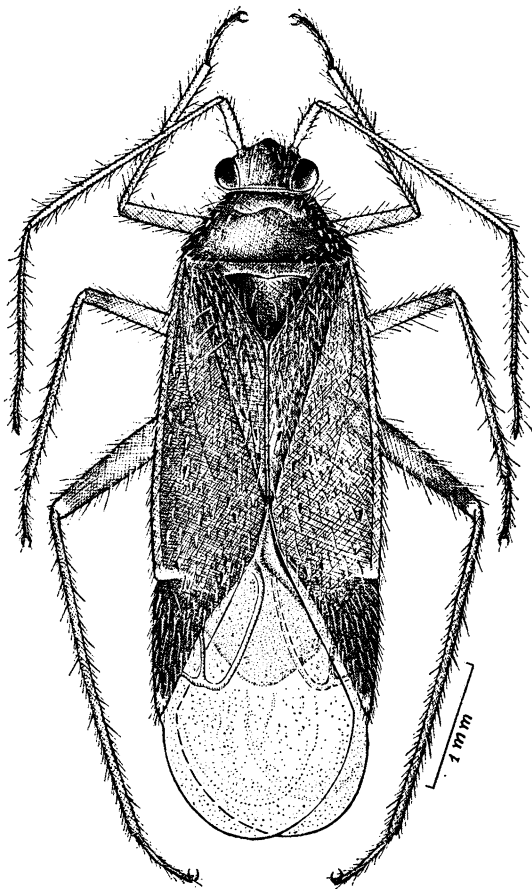
Characterized by its dimensions and structure of the male genitalia.

MALE: Length, 4.90 mm; width, 1.66 mm. Head length, 0.32 mm; head width through eyes, 0.72 mm; vertex width, 0.34 mm. Length of antennal segment I, 0.42 mm; II, 1.64 mm; III, 0.98 mm; IV, 0.52 mm. Pronotal

length, 0.52 mm; width, 1.20 mm. Cuneal length, 0.96 mm; width, 0.56 mm.

General coloration light to dark brown; head dark brown, clypeus, jugum and buccula slightly lighter; rostrum brown to dark brown, apex fuscous; antenna brown, segment IV dark brown; pronotum and scutellum dark brown, mesoscutum slightly lighter; hemelytra brown, lighter along outer margin with small light spot immediately anterior to cuneal fracture on emboliar area; cuneus reddish brown to brown, hind femur dark brown, tarsi fuscous apically.

Vestiture consisting of both silvery and scattered black scales as well as elongate semierect hairs.



*Ceratocapsella longicuneata* n. sp. Fig. 1 — male, holotype.