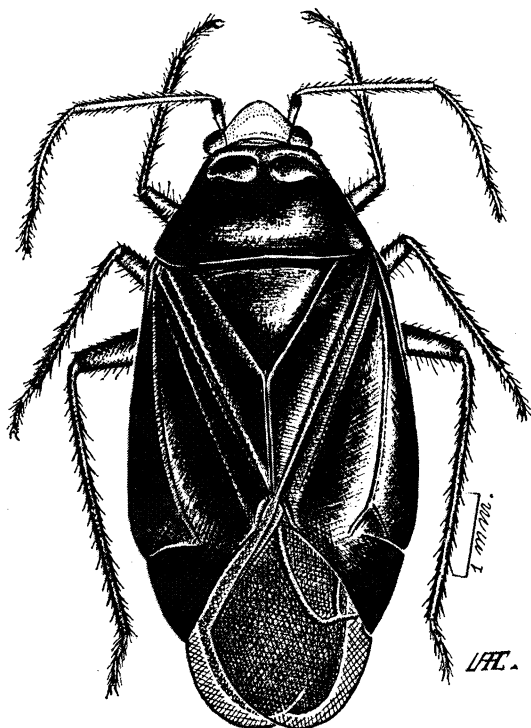


Jornandinus grandis n. sp.

(Figs. 9-12)

*Jornandinus grandis* n. sp. Fig. 9 — male, paratype.

Characterized by its dimensions and the structure of male genitalia.

MALE (measurements taken from 11 specimens, those of holotype given first followed in parenthesis by the average and the ranges): Length, 6.54 mm (6.34 mm, 5.84-6.80 mm); width, 2.88 mm (2.91 mm, 2.66-3.10 mm). Head length, 0.54 mm (0.48 mm, 0.44-0.54 mm); width of head through eyes, 1.26 mm (1.22 mm, 1.16-1.26 mm); vertex width, 0.62 mm (0.62 mm, 0.58-0.64 mm). Length of antennal segment I, 0.42 mm (0.42 mm, 0.38-0.44 mm); II, 1.72 mm (1.61 mm, 1.46-1.72 mm); III, 1.22 mm (1.17 mm, 1.10-1.26 mm); IV, 0.52 mm (0.51 mm, 0.44-0.54 mm). Pronotal length, 1.50 mm (1.41 mm, 1.34-1.52 mm); width, 2.30 mm (2.26 mm, 2.06-2.38 mm). Cuneal length, 1.10 mm (1.05 mm, 0.90-

1.12 mm); width, 1.00 mm (0.99 mm, 0.92-1.08 mm).

General coloration shining black and brownish orange; head primarily brownish orange, apex of clypeus and gula dark brownish black to black; antennal segment I brown, dark fuscous apically and occasionally fuscous at base, remaining segments yellowish brown, fuscous at extreme apices, segment IV also fuscous at base; rostrum brown to fuscous, darker apically; legs brownish black, trochanters and first tarsal segments lighter; remainder of body black.

Genitalia: Penis (fig. 10) with a single long sclerotized spiculum. Left paramere (fig. 11) strongly curved near apex, apex almost bifurcate. Right paramere (fig. 12) somewhat angulate, apex with small denticles.

FEMALE (measurements taken from 20 specimens, those of allotype given first followed in parenthesis by the average and the ranges): Length, 7.10 mm (7.06 mm, 6.44-7.54 mm); width, 3.52 mm (3.46 mm, 3.28-3.60 mm). Head length, 0.58 mm (0.63 mm, 0.52-0.72 mm); width of head through eyes, 1.30 mm (1.34 mm, 1.26-1.40 mm); vertex width, 0.70 mm (0.72 mm, 0.68-0.78 mm). Length of antennal segment I, 0.46 mm (0.46 mm, 0.42-0.50 mm); II, 1.66 mm (1.66 mm, 1.50-1.82 mm); III, 1.20 mm (1.19 mm, 1.08-1.28 mm); IV, 0.46 mm (0.51 mm, 0.46-0.54 mm). Pronotal length, 1.48 mm (1.51 mm, 1.36-1.62 mm); width, 2.54 mm (2.57 mm, 2.36-2.76 mm). Cuneal length, 1.16 mm (1.14 mm, 1.06-1.22 mm); width, 1.30 mm (1.29 mm, 1.16-1.40 mm).

Similar to males in color and structure.

HOLOTYPE: male, Mexico: Oaxaca, 2.7 mi. n.w. El Camaron, July 14, 1971, Clark, Murray, Hart, Schaffner. Deposited in the *National Museum of Natural History*, Washington, D.C. **ALLOTYPE:** female, same