

abdomen exposed, cuneus 0.20 mm (length) and 0.16 mm (basal width).

*Holotype* — Male, F. W. Lake, 10 ml. N. of Rocky R., via Coen, N. Qld., 17.XII. 1964, G. Montheith, in the *Queensland Museum*, Brisbane.

*Allotype* — Female, same data as holotype.

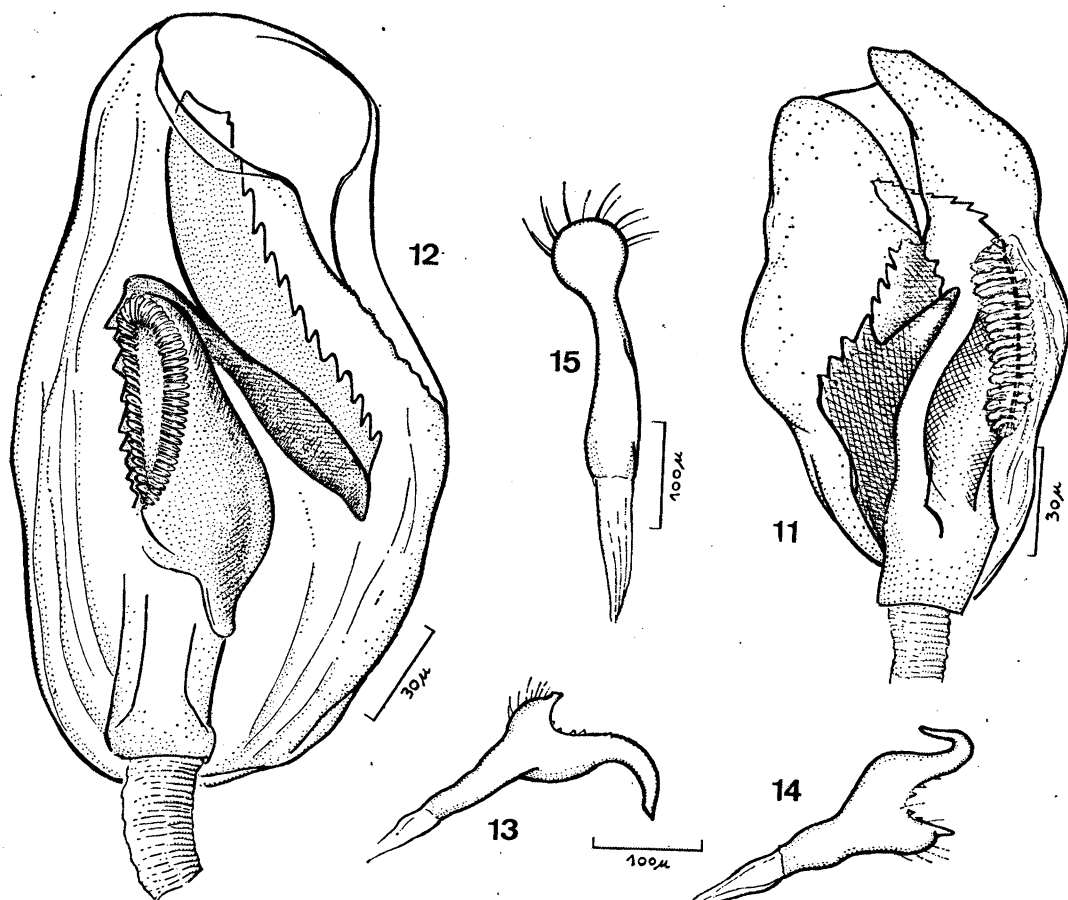
*Paratypes* — 5 males and 6 females, same data as type, in the *Collection of the Department of Entomology, University of Queensland*, Brisbane, Anic and the author's Collection.

According T. E. WOODWARD the species occurs on the plant *Lomandra banksii* R. Br. (Liliaceae). It is found only in Cape York Peninsula and is also the only species of *Lomandra* in New Caledonia. The genus is evidently Australian, with about 30 species.

*Myrmecoroides grossi* n. sp

(Figs. 16-20)

Characterized by its dimensions, colour and structure of male genitalia.



*Woodwardiola monteithi*, n. sp. Figs. 11 e 12 — vesica of aedeagus; figs. 13 e 14 — left paramere; fig. 15 — right paramere.