

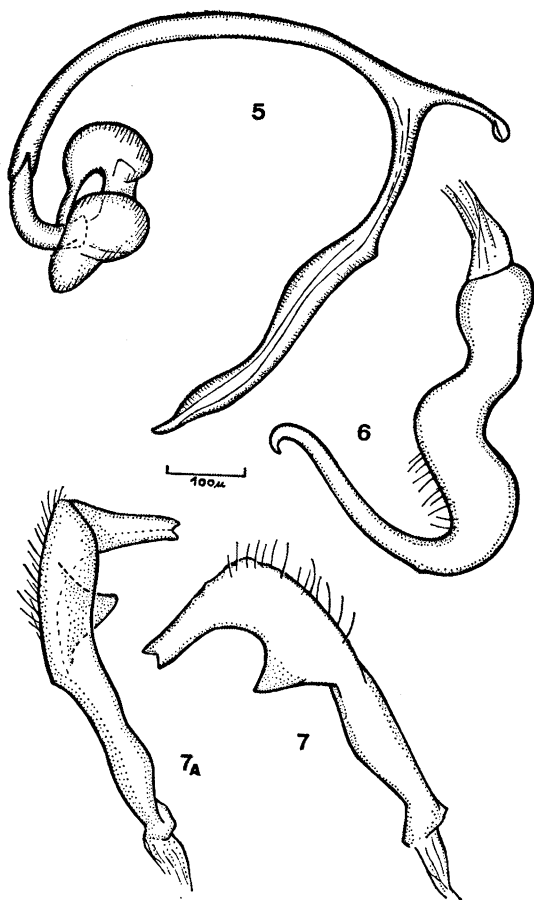
FEMALE: Similar to male in morphology and colour.

Holotype — Male, Noumea, New Caledonia, A. M. Lea, in the *South Australian Museum*, Adelaide.

This species is near *Grossicoris maculatus* n. sp., but differs in the uniform pale colour and in the structure of the male genitalia. Its specific name is after the reddish brown to black eyes.

Waterhouseana n. gen.

Phylinae, Hallodapini. Body elongate, mymecomorphic, strongly constricted on pronotum and hemelytra, with scattered long erect hairs or setae.



Grossicoris nigroculatus n. sp. Fig. 5 — penis; fig 6 — left paramere; fig. 7 — right paramere.

Head much wider than long, vertex marginate, curved and overlapping anterior margin of pronotum, frons also broadly curved and rounded in front, eyes following curvatures of frons and vertex, strongly depressed, overlapping pronotum laterally, seen from side oblique, much longer than wide, occupying almost the whole head, jugum, lorum and clypeus flat, depressed, placed about same level, gula, gena and buccula hidden under the head together with front coxal cleft, covered with long erect setae, rostrum reaching middle coxae, segment I not reaching beyond buccula. Antenna inserted level with middle of eye, segment I short, less than half the width of vertex, segment II about 6 times longer than I, slightly incrassate towards apex, III and IV mutilated; pubescence with hairs about as long as width of segments.

Pronotum very strongly constricted behind coxal cleft I, smooth, shining, first coxal cleft and coxa placed under head, collar and calli absent, lateral margin rounded, hind margin truncate, posterior angles rounded disc of pronotum prominent, strongly inclined towards head, mesoscutum covered, scutellum flat, small.

Hemelytra noticeably constricted at middle, punctate, covered with long erect setae, clavus much wider than corium on basal half, embolium very narrow covered at base by corium, apical portion of the latter enlarged, cuneus large, slightly longer than basal width, areolae of membrane rounded, legs long and slender, median and hind pair mutilated, third tarsal segment the longest, arolia absent, claws of Hallodapini type.

TYPE SPECIES OF GENUS: *Waterhouseana illustris* n. sp.

The genus differs from other Hallodapini genera in its peculiar, strongly depressed head, in the very large and curved eyes and especially in the strongly narrowed pronotum.