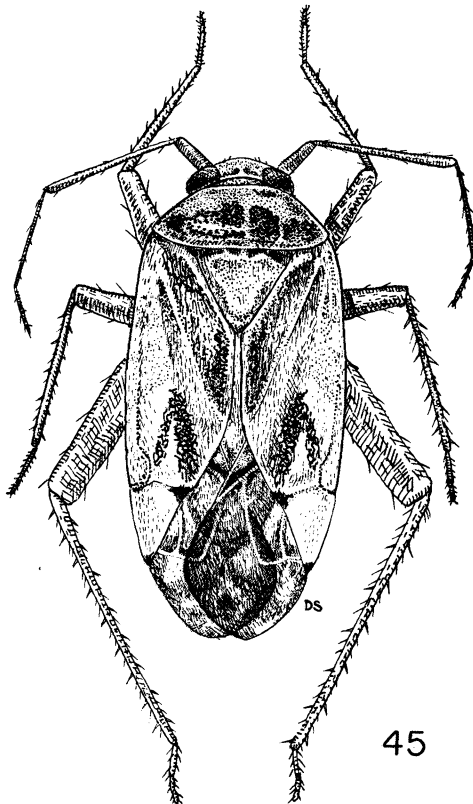


Genus *Taylorilygus* Leston30. *Taylorilygus pallidulus* (Blanchard).

(Figures 45, 46.)

*Phytocoris pallidulus* BLANCHARD, 1852, in Gay Hist. Fis. Pol. Chile, vol. 7, p. 183.*Lygus apicalis* FIEBER, 1861, Eur. Hem., p. 275.*Lygus putoni* MEYER, 1870, Schweiz. Ent. Ges., Mitt., p. 207.*Lygus prasinus* REUTER, 1876, Öfv. K. Vet.-Akad., Förh., vol. 32, no. 9, p. 72.*Lygus carolinae* REUTER, 1876, Öfv. K. Vet.-Akad., Förh., vol. 32, no. 9, p. 72.*Lygus uruguayensis* BERG, 1879, An. Soc. Ci. Arg., vol. 16, p. 16.*Lygus godmani* DISTANT, 1893, Bio. Cent. Amer. Rhynch., vol. 1, p. 433.*Lygus osiris* KIRKALDY, 1902, Trans. Ent. Soc. London, p. 262.*Lygus immitis* DISTANT, 1904, Fauna Brit. India, Rhynch., vol. 2, p. 456.*Lygus pubens* DISTANT, 1904, Fauna Brit. India, Rhynch., vol. 2, p. 456.*Lygus pallidulus*, CARVALHO, 1956, Ins. Micronesia Het. Miridae, vol. 7, no. 1, p. 89.

Characterized by its pale to greenish color and the structure of the male genitalia.

FIGURE 45. *Taylorilygus pallidulus* (Blanchard). Female.