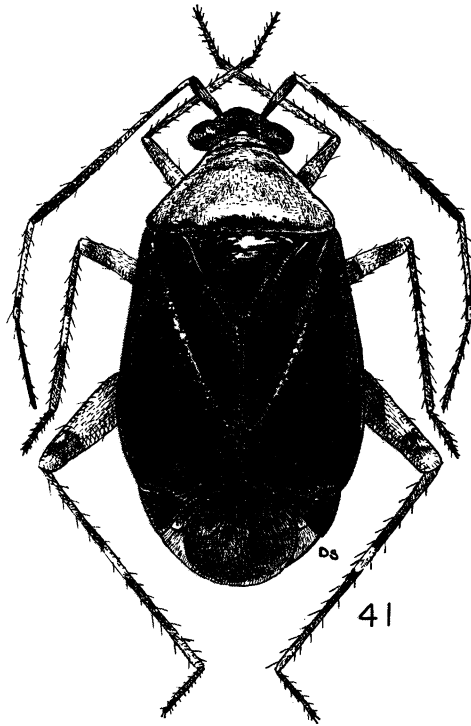


Genus *Horcias* Distant28. *Horcias chiriquinus* Distant.

(Figures 41, 42.)

*Horcias chiriquinus* DISTANT, 1884, Biol. Cent.-Amer. Rhynch., vol. 1, p. 278.

Characterized by its color and by the structure of male genitalia.

FIGURE 41. *Horcias chiriquinus* Distant. Female.

**MALE.** Length 6.2 mm., width 2.3 mm. *Head:* Length 0.3 mm., width 1.1 mm., vertex 0.46 mm. *Antennae:* Segment I, length 0.7 mm.; II, 1.7 mm.; III, 1.2 mm.; IV, 1.3 mm. *Pronotum:* Length 1.0 mm., width at base 2.0 mm.

General color brilliant bluish-black, with head, pronotum, scutellum and legs, luteous to red; clypeus, lorum, gena, middle of frons and posterior area of vertex fuscous to black (in some specimens the head is almost totally black); pronotum reddish lutescent, posterior margin opposite scutellum in fully mature specimens darkened; scutellum lutescent to red (sometimes bluish-black in fully mature specimens); hemelytra brilliant bluish-black, cuneus lighter, sometimes tending to reddish; membrane fuscous, nervures black; sternal and pleural areas, legs,