

SUBFAMILY CYLAPINAE

TRIBE FULVINI

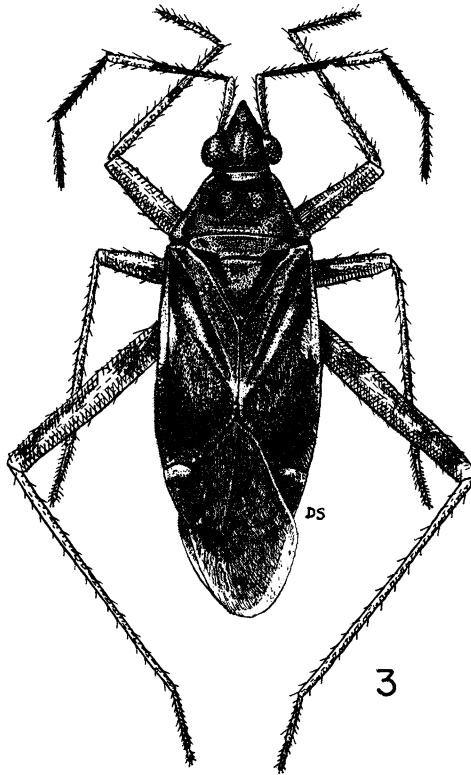
Genus FULVIUS Stål

Key to Galápagos Species

1. Base of hemelytra brown, corium with a transverse whitish band opposite to middle of clavus which is extended to embolium; coxa I whitish with narrow brown base and apex *F. geniculatus*
- The whole base of hemelytra until line level with apex of scutellum whitish; coxa I brown with extreme apex pale *F. brevicornis*

1. *Fulvius geniculatus* Van Duzee.

(Figures 3, 4.)

Fulvius geniculatus VAN DUZEE, 1933, Proc. Calif. Acad. Sci., ser. 4, vol. 21, no. 4, p. 29.FIGURE 3. *Fulvius geniculatus* Van Duzee. Male.

Characterized by its color and male genitalia.

MALE. Length 3.2 mm., width 1.0 mm. *Head*: Length 0.4 mm., width 0.5