

***Renodaeus gibbicollis* sp. n.**

Characterized by the shape of pronotum, dimensions, pubescence and small size.

Male: Length 2.4 mm, width across humeri 0.6 mm, width across apical area of hemelytra 0.75. **Head:** Length 0.30 mm, width 0.66 mm; vertex 0.24 mm. **Antennae:** Segment I, length 0.18 mm; II, 0.55 mm; III, 0.35 mm; IV, 0.3 mm. **Pronotum:** Length 0.5 mm, width at base 0.7 mm.

Castaneous; posterior angles of pronotum, base of antennae, propleurae, femori-tibial articulation, apex of tibiae, middle of rostrum, and outer part at the median constriction of hemelytra, paler; posterior coxae and extreme apex of posterior femora, yellow; membrane fuscous.

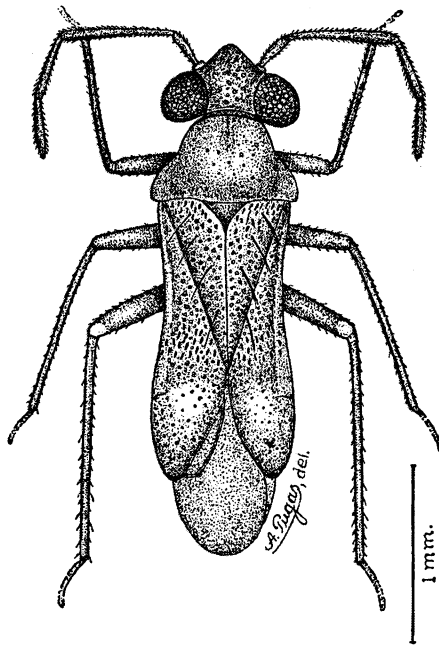


Fig. 2 — *Renodaeus gibbicollis* sp. n., ♂, holotype.

Hemelytra punctate at basal half and more scattered and finely so toward apex. Head dorsal and pronotum, sparsely punctate. Pronotum inflate, dome-like as viewed in profile, and rising immediately at its posterior margin. Seen from above it is constricted at its anterior portion and so that its anterior margin is narrower than the posterior margin of head; posterior angles depressed and somewhat projected outwards.

Pubescence on hemelytra consisting of two hair types: few scattered, long, erect ones, and short, adressed, scale-like ones. The latter are confined to the punctate part of the hemelytra as well as scutellum, being longer at a narrow band on the extreme base of hemelytra and at a patch on middle of corium. Between these two portions they are shorter. Pubescence of pronotum and head rubbed off.