

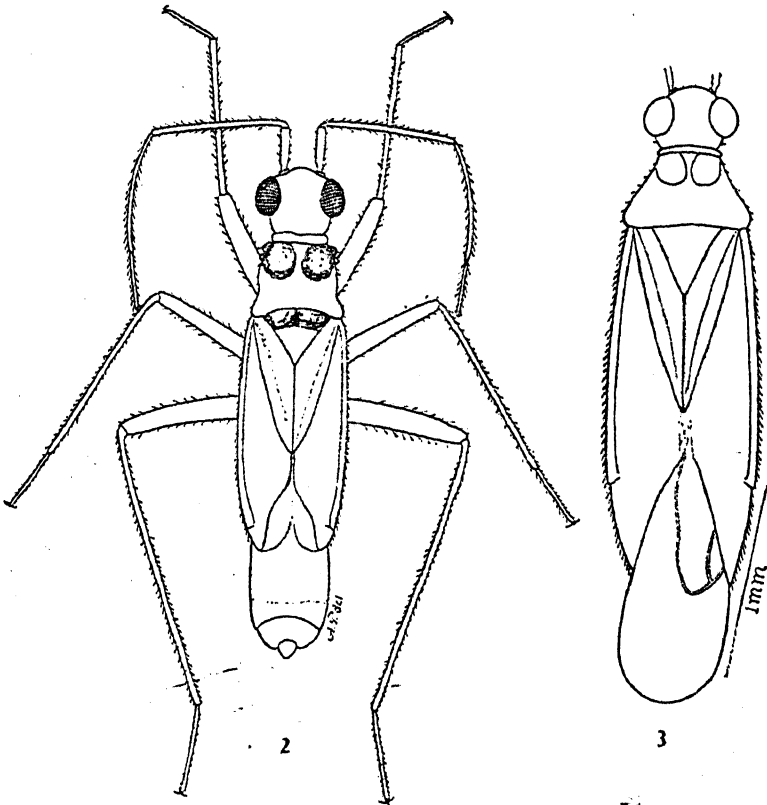
*Leptomiris mexicanus* sp. n.

(Figs. 2-8)

Characterized by its color and male genitalia.

Male: Length 3.7 mm, width 0.9 mm. Head: Length 0.3 mm, width 0.9 mm, vertex 0.2 mm. Antennae: Segment I, length 0.30 mm; II, 1.20 mm; III, 1.09 mm; IV, 0.37 mm. Pronotum: Length 0.5 mm, width at base 0.8 mm.

Color pale yellow to straw; head dark-brown to black, slightly pale on postero-internal margin of eyes; pronotum and eyes dark-brown with traces of reddish, collar pale yellow suffused with red, disc pale at middle; scutellum dark-brown with two pale median longitudinal areas, apex largely black; hemelytra translucent; abdomen reddish; base of coxae enbrowned; second antennal segment slightly darker than the other segments.



*Leptomiris mexicanus* g. n., sp. n. — Fig. 2: Female allotype; fig. 3: male holotype.

Hemelytra very long, reaching far beyond the apex of abdomen.

Other morphological characters as mentioned for genus.

Genitalia: Aedeagus (fig. 4) with two distinct spicula and a small field of spines at apex of vesica. Left clasper (fig. 5) strongly bent, pointed, with a dorsal field of setae. Right clasper (fig. 6) small and slender, pointed.