

with postero-lateral and posterior margins rounded; areola of membrane rounded externally.

Legs fairly long, the anterior coxae visible from above, inserted very near the head, noticeably narrowed apically, tibiae with hairs and spines, claws and arolia of the Orthotyline type.

Type of genus: *Bilirania myrmecoides* n.sp.

This genus is near to *Leucophoroptera* Poppius, from Australia, but differs by the strong pronotal constriction, shape of cuneus and anterior coxae.

*Bilirania myrmecoides* n.sp.

(Fig. 1)

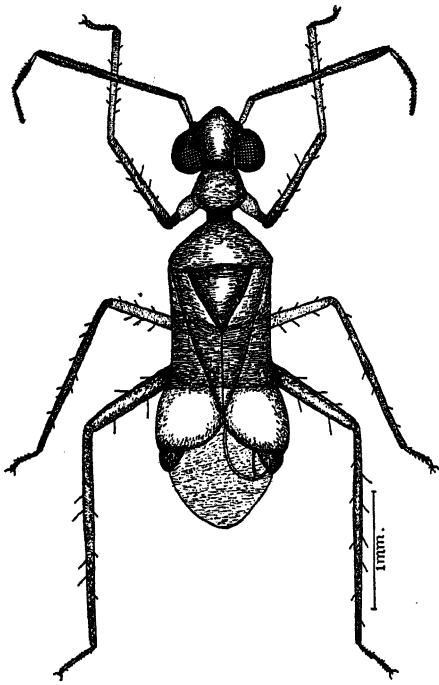


Fig. 1 — *Bilirania myrmecoides* n.sp., male, holotype.

Characterized by its color, shape of pronotum and male genitalia.

*Male*: length 3.6 mm, width 1.2 mm. *Head*: length 0.8 mm, width 0.8 mm, vertex 0.30 mm.

*Antenna*: segment I, length 0.2 mm; II, 1.2 mm; III, 0.4 mm; IV 0.2 mm.

*Pronotum*: length 0.9 mm, width at base 0.8 mm.

*Color*: castaneous to dark-brown, second antennal segment and femora tending to reddish-brown, base of third antennal segment whitish, basal portion of anterior coxae pale, hemelytra with a darker median transversal area which in fresh specimens may show a silvery color.

Morphological characters as in the description of genus. Genitalia not studied to preserve holotype.

*Female*: unknown.

*Holotype*: male, Biliran Isl. Philippines, Baker col., in the Collection of the U.S. National Museum (author's collection presently until safe transportation is found).