

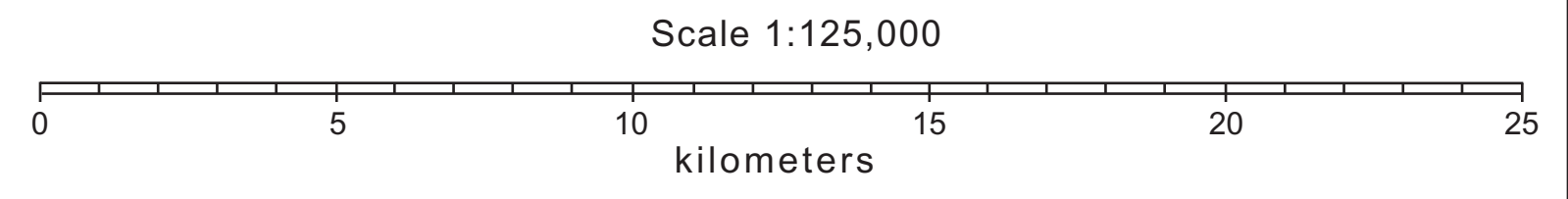
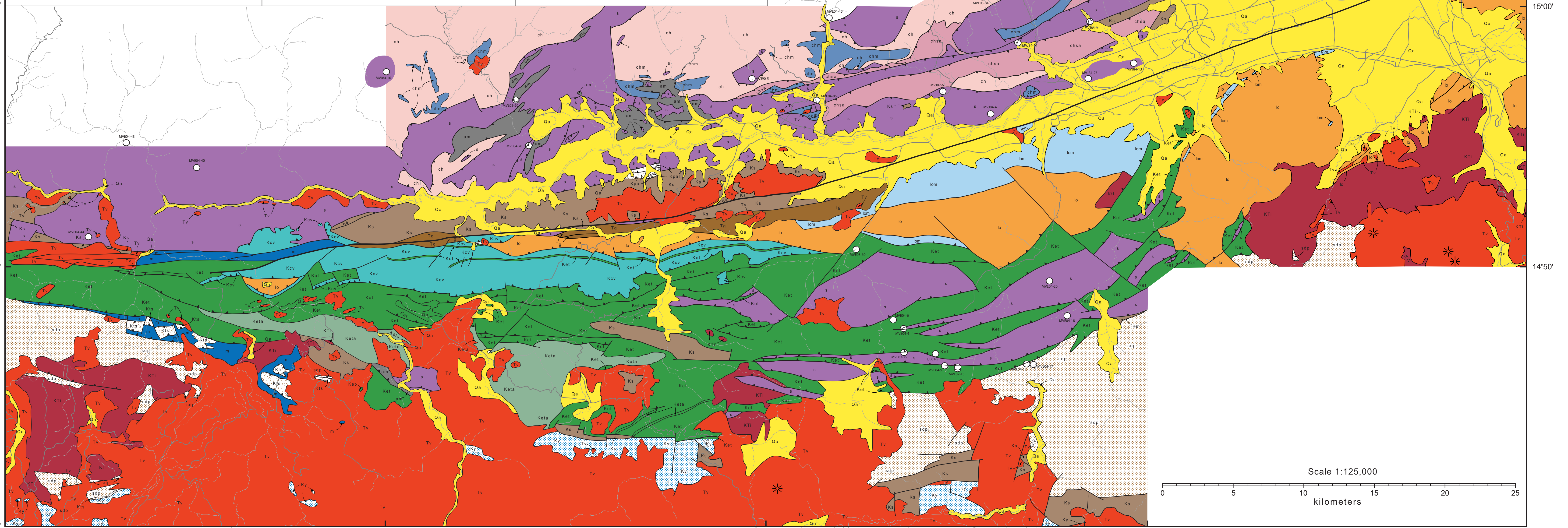
15°10' 90°15' 90°00' 89°45' 89°30' 15°10'

LEGEND

- QUATERNARY Qa alluvium
- TERTIARY - QUATERNARY Tv volcanic rocks, dominantly basalt flows and siliceous, pumiceous ignimorite
- MIOCENE Tg *GUASTATOYA FM.*: polymictic conglomerate and sandstone, with minor volcanic rocks, lignite beds, and limestone plant fossils
- EOCENE Tch *CHANCHÁN FM.*: tan siltstone and sandstone with minor dark limestone, plant fossils and gastropods
- LATE CRETACEOUS EARLY TERTIARY Ks *SUBINAL FM.*: white to brown (lower part) to red (upper part) sandstone and conglomerate, with minor limestone
- LATE CRETACEOUS Kcv *EL TAMBOR FM.*: amphibolite (Keta) black phyllite and greenstone (Ket), and mylonitized limestone (Kcv, Cerro La Virgen Ls.), with minor red cherts (Ketc)

- LATE CRETACEOUS (Cenomanian) Kpa *PALO AMONTONADO FM.*: Red sandstone and conglomerate, with minor limestone (Kpa) and basalt, Molluscan fossils
- MIDDLE CRET. (Albian-Aptian) Kt *YOJOA GP.*: massive, rudist-bearing limestone (Alima Fm.) and dark, platy, bituminous limestone (Cantarranas Ls.). Molluscan fossils
- MIDDLE CRET. (Albian-Aptian) Kts *TODOS SANTOS FM.*: Red, quartzose sandstone with minor conglomerate
- age? sdp *SAN DIEGO PHYLLITE.*: gray, red-weathering quartzose phyllite
- age? ch *CHUACÚS GP.*: schists, gneisses, and greenstones (ch, Jones Fm.), marble (chm, San Lorenzo Marble), and meta-granite and migmatite (chsa, San Agustín Fm.)
- age? lom *LAS OVEJAS GP.*: schists, gneisses, amphibolites, and meta-diorites (lo) and marble (lom)

- LATE CRETACEOUS s serpentine (s), with amphibolite (am), with local jadeite, albite, eclogite, and dunite
- LATE CRETACEOUS m fault-zone melange
- INTRUSIVE IGNEOUS ROCK UNITS
- LATE CRETACEOUS EARLY TERTIARY KTI granitic plutons (Chiquimula Pluton, San Pedro Ayampuc Pluton)
- STRUCTURAL SYMBOLS
- stratigraphic and igneous contacts
- fault contacts
- reverse or thrust faults, triangles on upthrust side
- CABAÑAS FUALT, showing segment that moved during 4 Feb. 1976 earthquake
- Quaternary volcanic center



14°40' 90°30' 90°15' 90°00' 89°45' 89°30'