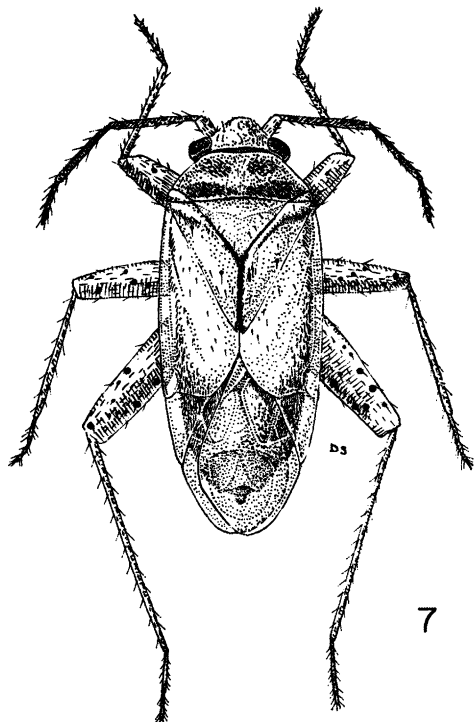


Genus *Campylomma* Reuter3. *Campylomma citrina* Carvalho, new species.

(Figures 7, 8.)

FIGURE 7. *Campylomma citrina* Carvalho, new species. Female.

Characterized by the color of the antennal segments, by the color of the body and by the aedeagus of male.

MALE. Length 2.7 mm., width 1.1 mm. *Head:* Length 0.1 mm., width 0.6 mm., vertex 0.37 mm. *Antennae:* Segment I, length 0.2 mm.; II, 0.8 mm.; III, 0.5 mm.; IV, 0.3 mm. *Pronotum:* Length 0.3 mm., width at base 0.9 mm.

General color pale flavescent to pale citrine, translucent; antennae with extreme base of segments I and II and a spot on subapical internal portion of segment I, fuscous to black, segments II and IV tending to fuscous; head, pronotum and mesoscutum citrine, scutellum slightly darker; hemelytra hyaline or translucent, membrane infusate at middle; underside concolorous with pronotum, rostrum tipped with fuscous, femora I and II with 4 to 5 spots at bases of setae equidistant from each other along ventral surface and others much smaller in size placed on outer surface, the hind femora with spots distributed as shown in figure 8c, tarsi tipped with fuscous.