

ern species that finds its eastern limits of distribution in Illinois, Iowa, Michigan and Minnesota.

Illinois Record.—NORTHERN ILLINOIS: 1 ♀.

***Lygus atritibialis* new species**

This species is allied to *hesperus* Knight and related western species, but is easily to be distinguished by its uniformly black antennae and posterior tibiae, fig. 163.

MALE.—Length 5.40, width 2.50. Head width 1.17, vertex 0.45; yellow, collum black. Rostrum, length 2.30, extending slightly beyond hind coxae, yellow, apex very dark brown. Antennae uniformly black; first segment, length 0.52; second, 1.56; third, 0.87; fourth, 0.65. Pronotum, length 1.25, width at base 2.16; yellow; a lateral, submarginal line joining outer half of callus, two rays behind each callus (in dark specimens these rays joining to form a submarginal line), and ray behind top of coxal cleft, black. Scutellum yellow; a geminate mark on middle of base, lateral edges and mesoscutum, black. Hemelytra pale, translucent yellowish; middle of clavus and outer apical angle of corium fuscous. Cuneus pale, trans-

lucent; outer margin yellowish, but not darker on apex. Membrane pale fuscous, veins pale. Dorsum clothed with fine, short, pale pubescence. Ventral surface uniformly yellow. Legs mostly yellowish, but hind femora with two subapical black annuli; hind tibiae black; middle and front pairs pale, fuscous at apices and each one with a black ring at base, spines black; tarsi fuscous, apices and claws very dark brown. Genital claspers as in fig. 161.

FEMALE.—Length 5.20, width 2.50. Head width 1.17, vertex 0.52. Antennae, first segment, length 0.49; second, 1.51. Slightly more robust than male, but very similar in coloration; black marks on pronotum usually more reduced.

FOOD PLANT.—Apparently breeds on wormwood (*Artemisia canadensis*).

Holotype, male.—Oregon, Ill.: July 4, 1932, on *Artemisia canadensis*, Mohr & Dozier.

Allotype, female.—Same data as for holotype.

Paratypes.—ILLINOIS.—OREGON: Same data as for holotype, 32 ♂, 48 ♀. ROCKFORD: June 11, 1933, Mohr & Townsend, 2 ♂. ZION: July 6, 1932, T. H. Frison *et al.*, 1 ♂.

MICHIGAN.—PENTWATER: July 17, 1916, E. Liljebblad, 1 ♂.

MINNESOTA.—ST. PAUL: St. Anthony Park, June 18, 1921, at light, H. H. Knight, 1 ♀, KC.

***Lygus elisus* Van Duzee**

Pale Legume Bug

Lygus pratensis elisus Van Duzee (1914, p. 20).

MALE.—Length 4.80–5.80. Head width 1.20, vertex 0.45. Rostrum, length 2.11, scarcely attaining posterior margins of hind coxae. Antennae, first segment, length 0.52, pale yellowish to brown, very dark brown on ventral surface; second, 1.98, dusky brown, lower side at base and extreme apex darker; third, 0.85, brownish, apex fuscous; fourth, 0.60, dusky brown. Pronotum, length 1.40, width at base 2.20; coarsely, deeply and closely punctate, with minute, pale pubescence. General color pale greenish with pronotum and scutellum bright green, a small black spot present behind each callus. Scutellum bright green, two black dashes in middle at base; roughly, transversely rugose. Mesoscutum black,

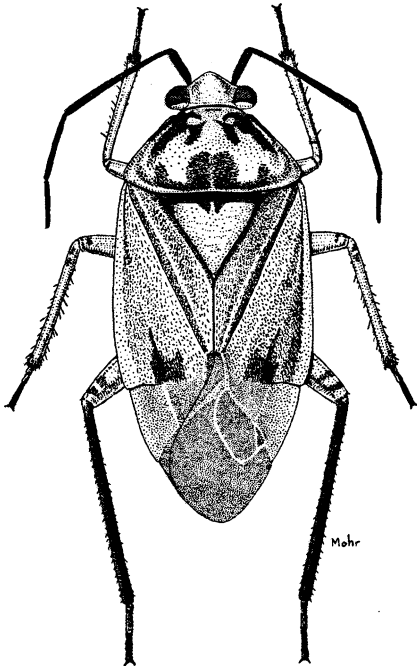


Fig. 163.—*Lygus atritibialis*, ♀.