

short, dusky pubescence, hairs somewhat decumbent on apical half. Legs black, thickly clothed with prominent, erect hairs. Venter red; genital segment becoming black; a large, prominent, erect tubercle present just

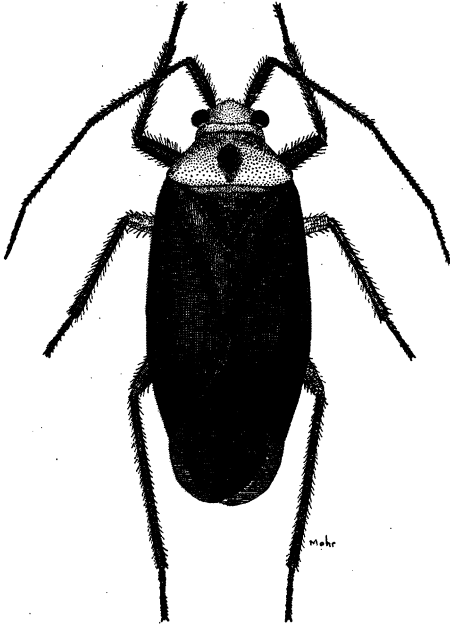


Fig. 151.—*Platytylellus fraternus*, ♀.

above base of left genital clasper, and another, smaller tubercle directed distad from near base of right clasper, fig. 150.

FEMALE.—Fig. 151. Length 9.10, width 3.50. Pronotum, length 1.52, width at base 2.64. Similar to male in form and color.

This species varies greatly in color, and many color combinations have been given varietal names. The typical form and variety *rubromarginatus* Knight (1923*d*, p. 558) have been recognized in Illinois material; varieties *regalis* Knight (1923*d*, p. 559) and *discifer* Knight (1923*d*, p. 559) have not.

HOST PLANT.—Apparently breeds on sumach (*Rhus aromatica*).

KNOWN DISTRIBUTION.—Connecticut, District of Columbia, Florida, Georgia, Illinois, Maryland, Michigan, Minnesota, New Hampshire, New Jersey, New York, North Carolina, Pennsylvania, Tennessee, Virginia, West Virginia.

Illinois Records.—BISHOP: June 23, 1906, 1 ♂, 1 ♀. BLUFF SPRINGS: June 10, 1932, Ross & Mohr, 4 ♂, 10 ♀. FOREST

CITY: June 6, 1905, 1 ♂. HARDIN: June 5-9, 1932, H. L. Dozier, 2 ♀. HAVANA: June 3, 1918, 1 ♀; June 8, 1905, Devil's Hole, 2 ♂; June 23, 1926, Devil's Hole, Frison & Hayes, 22 ♂, 12 ♀. KEITHSBURG: June 15, 1932, on *Rhus aromatica*, H. L. Dozier, 22 ♂, 7 ♀. MAKANDA: June 26, 1909, sweepings, 1 ♂. NORMAL: 1 ♂.

Platytylellus circumcinctus (Say)

Capsus circumcinctus Say (1832, p. 23; 1859, p. 343).

MALE.—Length 7.10, width 2.70. Head width 1.28, vertex 0.71. Antennae, first segment, length 0.77; second, 2.34; third, 1.54; fourth, 0.95. Head red, with front and tylus blackish and juga and lora more or less black; pronotum red; calli blackish, a flaring black ray located behind each callus and extending to basal margin of disk; scutellum and mesoscutum red, basal angles black; pleura red; sternum reddish, but becoming blackish on either side of median line; hemelytra black; embolium, outer margin of corium and cuneus red; legs black, tinged with reddish near bases of femora; venter chiefly red with genital segment and variable areas at sides black.

FEMALE.—Length 7.40, width 2.70. More robust than male, but very similar in coloration.

KNOWN DISTRIBUTION.—Originally described from Indiana, and now known from District of Columbia, Illinois, Maine, Massachusetts, New Hampshire, New Jersey, New York, North Carolina, Pennsylvania, Virginia.

Illinois Records.—DOLSON: June 25, 1932, Rocky Branch, Frison & Mohr, 1 ♂. OAKWOOD: June 16, 1925, T. H. Frison, 1 ♂.

Platytylellus insignis (Say)

Capsus insignis Say (1832, p. 22; 1859, p. 342).

MALE.—Length 6.70, width 2.60. Head width 1.19, vertex 0.67. Antennae, first segment, length 0.74; second, 2.20; third, 1.54; fourth, 0.97. General color black, opaque; finely granulate; head red, tylus and variable areas on juga and lora blackish; pronotum red, basal half of disk largely blackish, but broad central area of disk red, this red area not forming a clearly defined vitta; scutellum red, lateral margins blackish; ven-