

# Provisional Description

(with a figure)

of a supposed new genus and species of the family *Capsidae*  
(Div. *Laboparia* REUT.?).

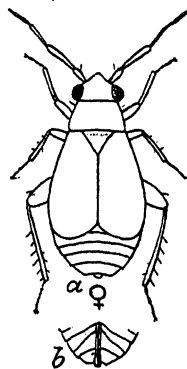
By

**A. C. Jensen-Haarup.**

Silkeborg, Denmark.

## Genus *Balticola* n. gen.

♀: Habitually like females of the genera *Orthocephalus* FIEB. and *Pachytomella* REUT., but remarkably differing by the want of aroliæ (according to O. M. REUTER and B. POPPIUS i litt.). Body and extremities with fine, adpressed, silvery grey pubescens; surface (in the species rather dull) moreover with semierect, stiff hairs, and also with scattered, scale like, adpressed, golden hairs on elytra and hindermost part of thorax etc. Eyes projecting, semiglobular, touching thorax. Antennæ comparatively short; 1st and 2nd joints equally thickened, 3rd and 4th joints thin and slender. Hind femora much thickened; hind tibiæ long and slender, with about 5 spines in each external row. Body small.



a. Upper side (and extremities) of ♀;  
b. Apex of abdomen (with genitalia) of same, seen from below.

♂: Not known (most probably full-winged, much prolonged and habitually quite unlike the female).

*Balticola Wahlgreni* n. sp. ♀: Apterous; brachypterous; membrane wanting. Oblong oval (see figure). Colour dull