

broad as anterior, its surface sparingly but somewhat coarsely punctate; mesonotum exposed; scutellum somewhat small and moderately tumid; hemelytra broad, finely punctate; cuneus broader than long; membrane longly passing abdominal apex; legs mutilated in typical specimen.

1467. *Sophianus alces*, sp. n.

Head, antennæ, pronotum, mesonotum, scutellum, and body beneath black; eyes dull grey; apex of scutellum, hemelytra, and the two apical joints of antennæ dull flavous; apex of clavus, lateral vein to corium, and basal and apical margins of cuneus piceous; membrane very pale fuliginous hyaline; pronotum distinctly coarsely punctate; corium obscurely pilose and obsoletely finely punctate.

Length 2 millim.

Hab. Ceylon; Yatiyantota (*Green*).

I have received a single specimen of this, the most extraordinary Capsid with which I am acquainted, the large eyes giving it a somewhat Saldoid appearance. Its position in the Isometopinæ is however clear, and in that view I am supported by my friend Mr. E. Saunders, whose opinion I was glad

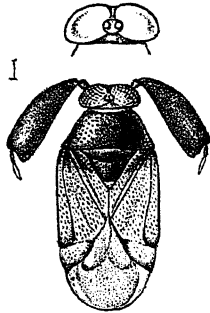


Fig. 319.
Sophianus alces.

to receive on the question.

Species of Capsidæ known only by descriptions and which I have failed to identify.

1468. *Capsus albipes*, *Motsch. Bull. Soc. Nat. Mosc.* xxxvi (2) p. 82 (1863).

Black; head rufous; ^{antennæ} lateral margins of hemelytra, and the legs white; head triangular, shining, front foveolate, apex of clypeus and the eyes fuscous-black; pronotum transversely trapeziform, subconvex, strongly punctate; scutellum triangular, rugosely punctate, posteriorly elevated, shining; hemelytra medially moderately dilated, posteriorly attenuated; membrane unicolorously opaque; anteriorly ^{scutellum} very distinctly punctate; body beneath black.

Length " $\frac{3}{4}$ to $\frac{1}{2}$ line."

Hab. Ceylon; Patannas (Patna?) Mt. (*fide Motschoulsky*).

1469. *Deræocoris rubrovulneratus*, *Motsch. Bull. Soc. Nat. Mosc.* xxxvi (2) p. 83 (1863).

Black, punctate, thorax shining with its posterior angles, the apex of scutellum, and "axillis geniculisque" rufous-testaceous;