

Genus **TURNEBUS**, nov.Type, *T. cuneatus*, Dist.*Distribution.* Ceylon.

Broadly ovate; head short, broad, anteriorly rounded, but, including eyes, much narrower than anterior margin of pronotum; ocelli distinct and placed near eyes; antennæ finely setose, basal joint scarcely passing lateral margins of head, second about the length of third and fourth together, the last two slender; rostrum long, extending through two-thirds of the abdomen from base; pronotum short, broad, punctate, very much broader than long, the lateral margins convexly rounded, the posterior margin bisinuate, the anterior angles distinctly subacutely prominent; mesonotum exposed; scutellum very long, angularly and regularly attenuated from base; corium with the lateral areas convexly amplified; cuneus longer than broad; legs short and slender.

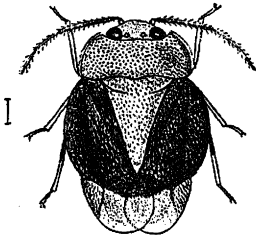
1466. *Turnebus cuneatus*, sp. n.

Fig. 318.

Turnebus cuneatus.

Head, pronotum, mesonotum, scutellum and sternum ochraceous; eyes, first and second joints of antennæ, corium, rostrum, abdomen beneath, and intermediate and posterior femora black; apex of rostrum ochraceous; above somewhat coarsely punctate and shortly pilose; membrane pale smoky hyaline; antennæ finely, palely setose; lateral margins of pronotum distinctly reflexed.

Length $3\frac{1}{2}$ millim.*Hab.* Ceylon; Pundaluoya (*Green*).Genus **SOPHIANUS**, nov.Type, *S. alces*, Dist.*Distribution.* Ceylon.

Ovate, head broad, deflected anteriorly, the eyes very large and broad, coarsely granulate, nearly meeting on vertex and almost touching the anterior margin of the pronotum; two distinct and prominent ocelli placed between the eyes; antennæ with the first joint short and globosely incrassate, second joint about four times as long as first, very widely and laminately incrassate, gradually widened from base, its apex broadly, a little sinuately truncate, the two apical joints very short, the third slender, the fourth moderately thickened; rostrum reaching the posterior coxæ; pronotum convexly tumid, deflected anteriorly, with a narrow anterior collar, its posterior margin truncate and about twice as