

- b.* Head long, transverse anteriorly, narrowly elongated posteriorly; eyes remote from anterior margin of pronotum and inserted near bases of antennæ.
- a'.* Pronotum coarsely punctate; corium opaque . . . . . ANGERIANUS, p. 437.
- b'.* Pronotum not or remotely punctate; corium hyaline . . . . . FELISACUS, p. 438.

Genus **PHARYLLUS**, nov.

Type, *P. pistacinus*, Motsch.

*Distribution.* Ceylon.

Subelongate; head broad with a central longitudinal impression, deflected in front of eyes, which are very large and transverse and well separated from anterior margin of pronotum; antennæ with the first joint longer than head, second rather more than twice the length of first; rostrum mutilated in specimen examined; pronotum with a very narrow anterior collar, transversely impressed before middle and enclosing two transverse nodulosities, lateral margins almost obliquely straight, basal margin truncate, slightly recurved at lateral angles; scutellum a little tumid, its apex subacute; corium opaque, cuneus longer than broad with an acute fracture; posterior tibiæ long, setose.

1382. *Pharyllus pistacinus*, *Motsch.* (*Leptomerocoris*?) *Bull. Soc. Nat. Mosc.* xxxvi (2) p. 85 (1863).

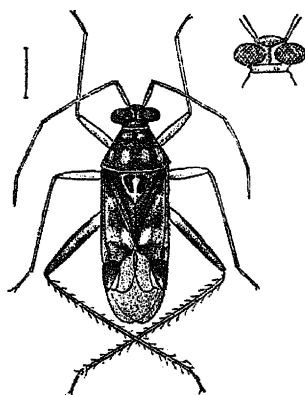


Fig. 279. — *Pharyllus pistacinus*.

Dark purplish-brown; extreme basal margin and two (sometimes four) discal spots to pronotum, lateral margins, apex, and a central line to scutellum, a spot before middle and two transverse fasciate spots before apex of corium, coxæ, trochanters, anterior and intermediate legs, bases of posterior femora, tarsi and base of abdomen beneath ochraceous; membrane fuliginous; anterior and intermediate tibiæ finely setose, posterior tibiæ longly setose.

Length  $6\frac{1}{2}$  millim.

*Hab.* Ceylon; Colombo (*Green*).

Genus **ARGENIS**.

*Argenis*, *Dist. A. M. N. H.* (7) xiii, p. 107 (1904).

Type, *A. incisuratus*, Walk.

*Distribution.* Ceylon.

Head broad, not horizontally produced in front of eyes, which