

first joint and basal half of second more or less ochraceous; pronotum with the anterior lobe finely mottled with reddish, basal margin and some linear spots at anterior margin black, a central longitudinal line black or reddish, the lateral margins

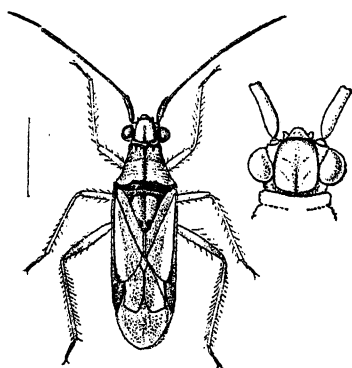


Fig. 265.—*Calliocrutides rama*.

also sometimes black; hemelytra hyaline, the lateral margins and cuneus reddish, the venation piceous; femora, especially posterior femora, finely spotted with fuscous-red, their bases unspotted.

Length 8 to $9\frac{1}{2}$ millim.

Hab. Ceylon; Peradeniya, Nawalapitiya (*Green*).

Genus **HARPEDONA**, nov.

Type, *H. marginata*, Dist.

Distribution. Ceylon.

Subelongate; head moderately robust and tumid, somewhat obscurely but broadly centrally longitudinally sulcate; antennæ with the first joint about as long or scarcely as long as head, second joint more than twice or nearly three times as long as first, its apex very slightly thickened; pronotum moderately long, with a distinct narrow anterior collar, and transversely constricted before middle, anterior lobe much narrower and shorter than posterior lobe, with a small distinct foveation at centre of its posterior margin, posterior lobe finely and obscurely punctate, its posterior lateral angles subprominent; scutellum somewhat small and foveate; hemelytra a little narrowed posteriorly, with the lateral margins straight and subparallel; cuneus broad; legs slender; rostrum passing the anterior coxæ (imperfectly seen owing to typical specimen being in a carded condition), first joint about as long as head, first and second joints subequal, third and fourth short.