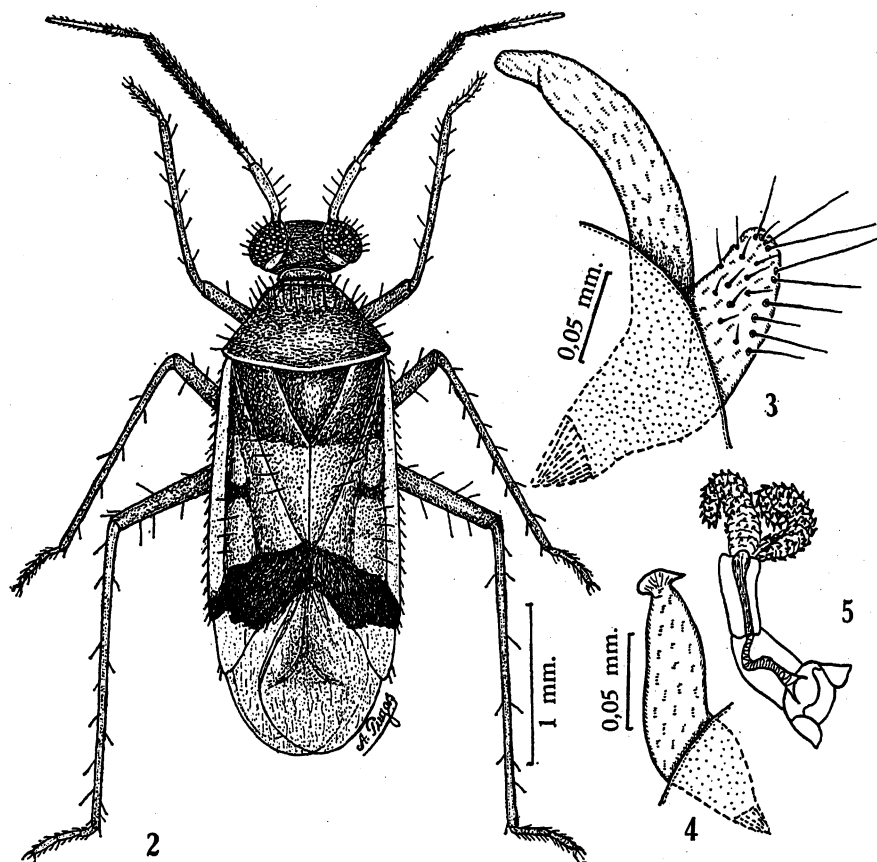


*Genitalia*: Aedeagus (fig. 5) with two vesical spiny lobes. Left clasper (fig. 3) with the shape of a hand possessing only the thumb and indicator, the shorter portion or thumb-like with several long setae. Right clasper (fig. 4) smaller, ended by an expanded portion with a point turned inwards.

*Female*: Unknown.



*Amazonocoris longipilosus* n.g., n.sp. — Fig. 2: Male; fig. 3: left clasper; fig. 4: right clasper; fig. 5: aedeagus.

*Holotype*: Male, Lower Amazon, Monte Alegre, 17. IX. 1933, J. G. Myers, Brit. Mus. 1933.400, in the Collection of the British Museum of Natural History.

#### *Cylapoides* n.g.

*Cylapinae*, *Cylapini*, characterized by its small size, body smooth, long, fine and erectly pubescent, vertex strongly carinate, first antenna shorter than width