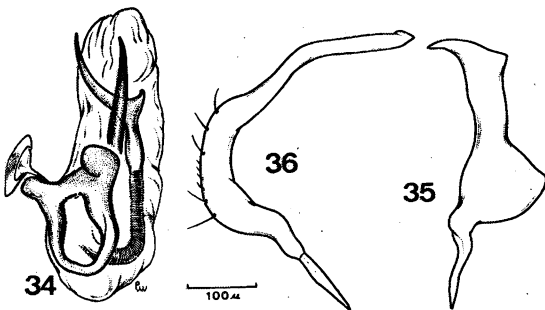


Fig. 33 – *Bironiella metallescens* Poppius, female.

body dark brown, coxae castaneous, the II and III pair pale, femora castaneous, tibiae and tarsi pale.

Head horizontal, vertex depressed at middle, marginate, eyes noticeably granulose, reaching the gula inferiorly, occupying the posterior half of head, pronotum rugose punctate, hemelytra punctate, pubescence short and adpressed, rostrum reaching beyond posterior coxae.



Bironiella metallescens Poppius – Fig. 34: Penis; fig. 35: left paramere; fig. 36: right paramere.

Genitalia: Penis (fig. 34) small, with characteristic secondary gonopore and a sclerotized spiculum. Left paramere (fig. 35) slender and curved apically, enlarged basally. Right paramere (fig. 36) falciform elongate, with a median outgrowth.

Female: Similar to male in coloration and general aspect, but more robust. Length 3.6 mm, width 1.6 mm. **Head:** Length 0.4 mm, width 0.7 mm, vertex 0.36 mm. **Antenna:** broken. **Pronotum:** Length 0.6 mm, width 1.4 mm. **Cuneus:** Length 0.36 mm, width 0.28 mm.

Geographical distribution: Papua New Guinea, New Britain.

Specimens studied: Holotype, male, New Guinea, Huon Golf, Salteberg, 1899, Biró, National Museum of Natural History, Budapest; 2 males and a female; NEW GUINEA: NE, Adelbert Mts., Wanunia, 800-1000 m, 27.X.1958, J. L. Gressitt; Wau, Morobe Dist., 1200 m, 23-27.VII.1962, M. Sedlacek; NEW BRITAIN: Gazelle Pen., Baining St. Pauls, 350 m, 9.IX.1955, J. L. Gressitt, in the Collections of the Bernice P. Bishop Museum, Honolulu, Hawaii and of the senior author.

Bironiella rubernotata n. sp.

(Fig. 37)

Characterized by the coloration of the hemelytra and by its dimensions.

Female: Length 3.3 mm, width 1.6 mm. **Head:** Length 0.4 mm, width 0.7 mm, vertex 0.28 mm. **Antenna:** Segment I, length 0.3 mm; II, 0.9 mm; III, 0.2 mm; IV, – mm. **Pronotum:** Length 0.5 mm, width 1.1 mm. **Cuneus:** Length 0.28 mm, width 0.28 mm.

General coloration black with red spots; head, pronotum, mesoscutum and scutellum black; hemelytra castaneous with two characteristic red spots at apex of corium and embolium; cuneus black, membrane fuscous, the areolae darker; antennae and legs castaneous, femora black with reddish apices, tibiae dark. Underside of body, coxae pale.

Male: Unknown.

Holotype: Female, NEW GUINEA: NE, Boden, 100 m., 11 km SE. of Oerberfaren, 10.VII.1959, light trap, T. C. Maa col., in the Collection of the Bernice P. Bishop Museum, Honolulu, Hawaii.