

**Vanniusoides brevis** (Poppius, 1909) n. comb.

(Figs. 21-26)

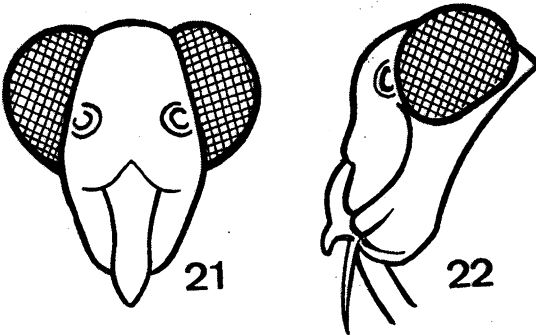
*Vannius brevis* Poppius, Acta Soc. Sci. Fenn. 37 (4) 15; Id. Bergroth, Ann. Soc. Ent. Belg. 60: 72, 1920; Id. Carvalho, Arq. Mus. Nac. R. Jan. 44: 34, 1957.

Characterized by its coloration and by the structure of the male genitalia.

**Female:** Length 2.5 mm, width 0.9 mm. **Head:** Length 0.3 mm, width 0.5 mm, vertex 0.20 mm. **Antenna:** Segment I, length 0.3 mm; II, 1.3 mm; III and IV, broken. **Pronotum:** Length 0.2 mm, width 0.8 mm. **Cuneus:** Length 0.40 mm, width 0.20 mm (holotype).

General coloration pale yellow to citrine with reddish areas; spot around antennal peduncle, eyes, lateral spots on collar, median spot on disc, spots on basal half of clavus oblique spot on mid portion on corium, apical transversal spot on corium and embolium, small spots on external margin of embolium, subapical spot on cuneus, segment I of antenna and spots on femora reddish. Underside of body castaneous, propleura with a wide reddish longitudinal fascia.

Frons rounded without a sulcus, pronotum bisinuate on hind margin, pubescence semierect, rostrum reaching the V or VI abdominal segment, head much higher than long, jugum and lorum vertical, clypeus projecting downwards, eyes situated on the superior portion of head.

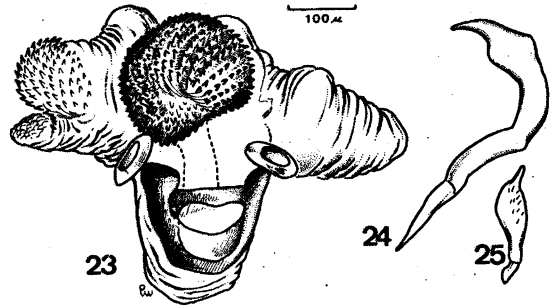


*Vanniusoides brevis* (Poppius) – Fig. 21: Head in front view; fig. 22: head in lateral view.

**Male:** Length 3.2 mm, width 1.2 mm. **Head:** Length 0.2 mm, width 0.5 mm, vertex 0.20 mm. **Antenna:** Segment I, length 0.2 mm; II, 1.2 mm; III, 1.3 mm; IV, broken. **Pronotum:** Length 0.3 mm, width 0.8 mm. **Cuneus:** Length 0.42 mm,

width 0.20 mm. Similar to female in coloration and general aspect.

**Genitalia:** Penis (fig. 23) with a characteristic secondary gonopore surrounded by spines, smooth and spiny lobes. Left paramere (fig. 24) very small, simple. Right paramere (fig. 25).



*Vanniusoides brevis* (Poppius), male – Fig. 23: Penis; fig. 24: left paramere; fig. 25: right paramere.

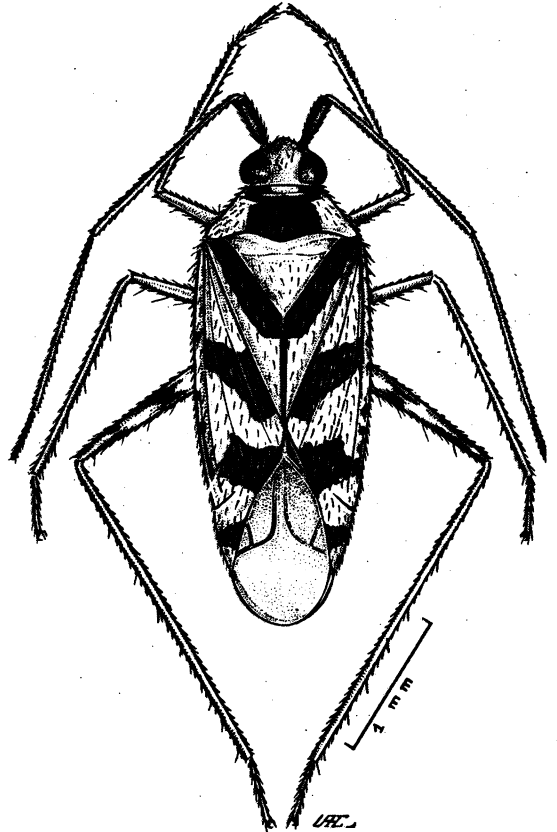


Fig. 26 – *Vanniusoides brevis* (Poppius), holotype.