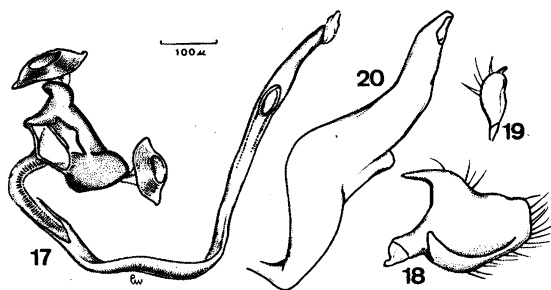


Fig. 16 – *Trichofulvius zonatus* Bergroth, male.

Morphological characters as given for genus. Pubescence of body of medium length.

**Genitalia:** Penis (fig. 17) of the Phylini type as shown in illustration. Left paramere (fig. 18) characteristic, compact, with two finger-like projections. Right paramere (fig. 19) very small. Theca (fig. 20) situated externally.

**Female:** Dimensions, general coloration and aspect similar to male, slightly more robust.



*Trichofulvius zonatus* Bergroth – Fig. 17: Penis; fig. 18: left paramere; fig. 19: right paramere; fig. 20: external theca.

**Geographical distribution:** Philippine Islands, Papua New Guinea.

**Specimens studied:** 1 male and 5 females: NEW GUINEA: NE, Kassam, 1350 m, 48 km, E. of Kainantu, X.28.1959, T. C. Maa; NE, Wonenara, 3°40'S, 145° 55'E 1450 m, 14.VI.66, J. L. Gressitt & Wilkes, light trap; West New Guinea, Vogelkop: Kiebar W of Mamokwaeri, 550 m, 4-31.I.1972, S. Quate & L. Quate; Papua, Ruka, 9 m, 12.V III.64, H. Clissold, light trap; NE, Wau, Morobe Dist., 1200 m, 15.IV.1963, Sedlacek; NE, Materik, 160 m, 15.X.1957, J. L. Gressitt.

This species differs from *Trichofulvius fasciatus* Poppius, 1909 by the absence of dark small spots on the upper surface of the body and by the shorter pubescence.

#### *Vanniusoides* n. gen.

*Vannius* Poppius, Acta Soc. Sci. Fenn. 37 (4): 3, 14, 1909.

Cylapinae, Cylapini. Body elongate, smooth, with long and erect pubescence. Head (figs. 21, 22), vertical, produced downwards, almost as long as wide, vertex slightly marginate, frons prominent, smooth, not sulcate, clypeus small, with a tubercular projection downwards, jugum large, lorum and gena small, gula short, rostrum reaching the 5th abdominal segment; eyes contiguous with collar, antenna with segment I much thicker than others, segments II-IV slender, with short pubescence.

Pronotum with collar enlarged at middle, disc wider than long, lateral margins carinate, hind margin noticeably bisinuate, humeral angles rounded; mesoscutum exposed; scutellum small, flat.

Hemelytra with embolium wide, cuneus about twice as long as wide at base, membrane biareolate, the cells elongate. Underside of body with ostiolar peritreme rounded, hind femora and tibiae noticeably long, the tibiae with short hairs and a few spines.

Type species of genus: *Vanniusoides brevis* (Poppius, 1909).

This genus is very near to *Vannius* Distant, 1883 but differs by the absence of a sulcate frons, by the presence of a tubercle projecting downwards from the clypeus and by the eyes contiguous to pronotal collar.