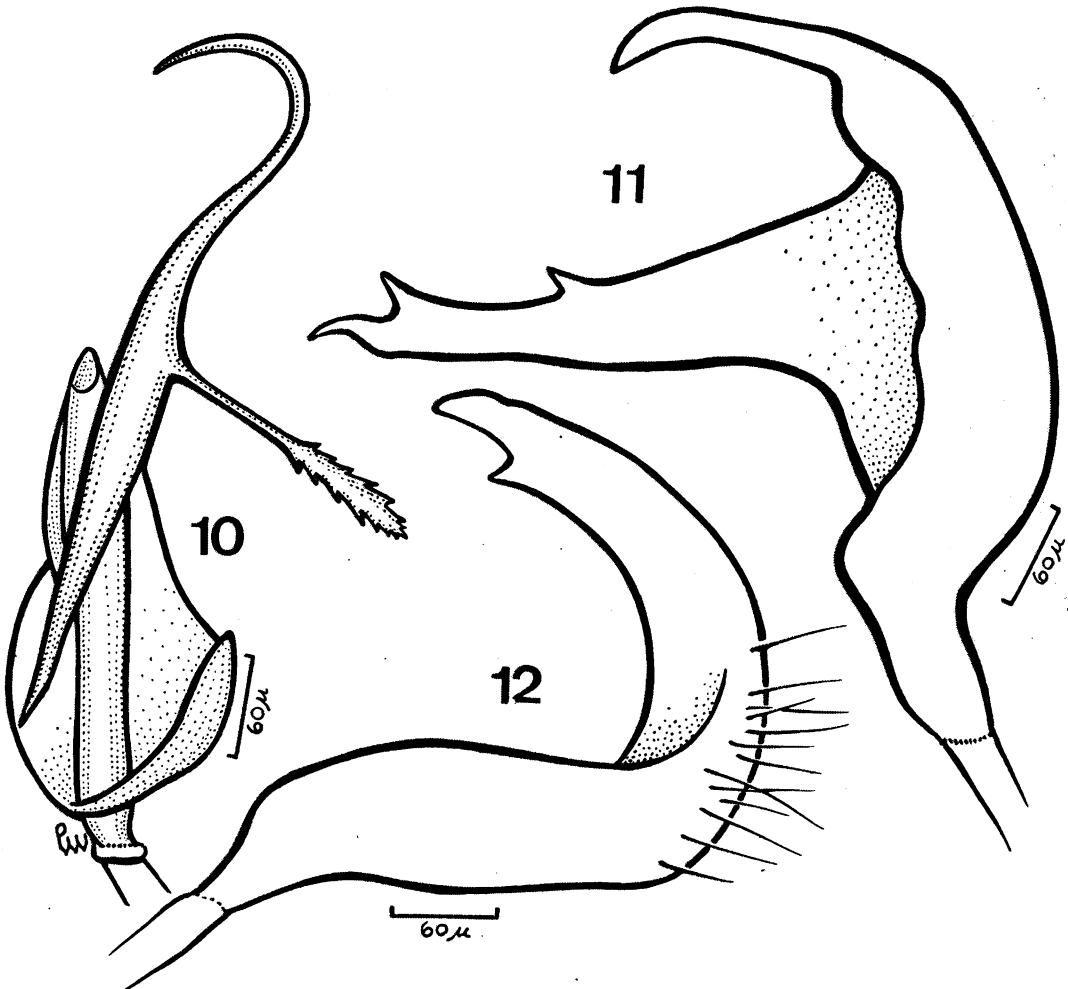


data as holotype. Deposited in the *National Museum of Natural History*. PARATYPES: 10 males, 22 females, same data as holotype. Deposited in the collection of the *Department of Entomology*, Texas A&M University, College Station, Texas; *J. C. M. Carvalho collection*, Rio de Janeiro; and *Canadian National Collection*, Ottawa, Canada.

*Oaxacaenus* n. gen.

Orthotylinae, Orthotylini. Characterized by its vitreous appearance, inpunctate integument and sparse vestiture.

Head smooth, shining, wider than long; eyes located at rear of head, slightly removed from pronotum, compressed laterally; vertex depressed, carinate, the carina with erect light hairs; frons broad, slightly convex; clypeus vertical, rounded, somewhat compressed laterally; jugum small, flattened; lorum convex; gula short. Rostrum reaching posterior margin of mesosternum; segment I thickened, reaching anterior 1/3 of prosternum, I and IV subequal in length; segment III shortest. Antennal socket touching eye; segment I shorter than width of vertex, hairs sparse, mostly decumbent with 2 or 3 erect hairs apically; segment II



*Jornandinus grandis* n. sp. Fig. 10 — vesica of aedeagus; fig. 11 — left paramere; fig. 12 — right paramere.