

III and IV consisting of very short appressed and semierect hairs.

Pronotum smooth, only slightly declivent anteriorly; lateral margins distinctly carinate; calli obsolete; posterior margin straight or very slightly convex, covering most of mesoscutum; posterior corners rounded; scutellum slightly convex; hemelytra with sides parallel; veins indistinct; cuneus of male twice as long as width at base, that of female slightly shorter than twice as long as width; vestiture of pronotum, mesoscutum, scutellum and hemelytra consisting of short semierect bristlelike hairs and decumbent hairs. Legs slender with short appressed hairs; tibiae with longitudinal rows of minute corrugations and several rows of spines, spines about as long as diameter of tibia; arolia conspicuous, of typical orthotyline type.

TYPE SPECIES OF GENUS, *JUAREZICORIS ANTENNATUS* n. sp.

*Juarezicoris antennatus* n. sp.

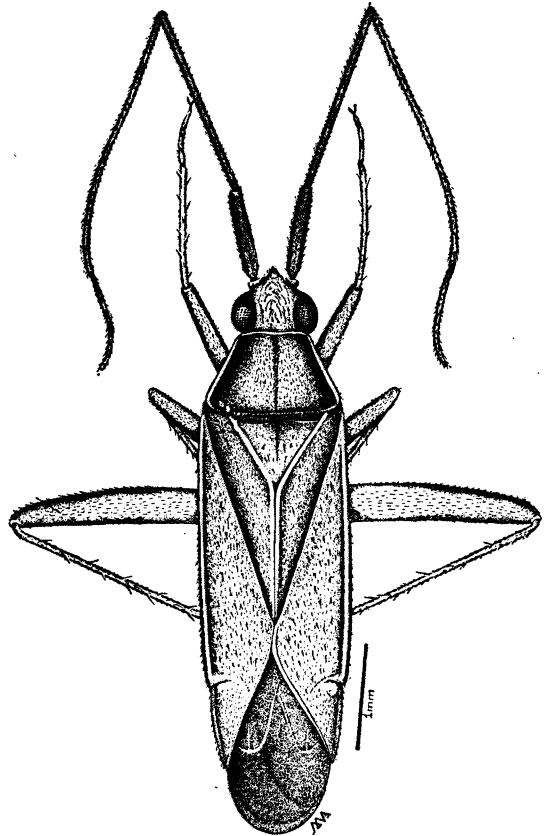
(Figs. 1-5)

Characterized by the color, dimensions and structure of the male genitalia.

MALE (measurements taken from 20 specimens, those of holotype given first followed in parenthesis by the average and the ranges): Length, 5.20 mm (5.15 mm, 4.70-5.80 mm); width, 1.40 mm (1.38 mm, 1.22-1.56 mm). Head length, 0.52 mm (0.52 mm, 0.48-0.58 mm); width through eyes, 0.84 mm (0.81 mm, 0.72-0.84 mm); vertex width, 0.28 mm (0.30 mm, 0.28-0.32 mm). Length of antennal segment I, 1.00 mm (0.93 mm, 0.82-1.06 mm); II, 2.12 mm (2.13 mm, 1.84-2.50 mm); III, 2.64 mm (2.73 mm, 2.18-3.40 mm); IV, 0.92 mm (0.91 mm, 0.72-1.10 mm). Pronotal length, 0.76 mm (0.75 mm, 0.68-0.86 mm); width, 1.24 mm (1.22 mm, 1.08-1.38 mm).

Cuneal length, 0.82 mm (0.82 mm, 0.76-0.94 mm); width, 0.44 mm (0.43 mm, 0.36-0.52 mm).

General coloration pale; antennae brown to reddish brown; lateral areas of frons, areas along eyes, apices of femora, tibiae pale yellow; middorsal line on pronotum continuing onto scutellum orange; some specimens with orange coloration on clavus near scutellum and on exocorium; occasionally areas immediately around eyes and anterior corners of pronotum with reddish coloration; pronotal carina whitish to pale yellow; lateral areas of pronotum bordering margin, corium and clavus except along claval commissure light fuscous; embolium hyaline; cuneus pale yellow to yellowish-orange; apex of rostrum, apex of



*Juarezicoris antennatus* n. sp. Fig. 1 — male, paratype.