

TRIBE STENODEMINI

- 1. First antennal segment covered by long, erect pubescence, the hairs at least as long as half the width of segment *Dolichomiris*
- First antennal segment covered by very short pubescence, the hairs shorter than half the width of the segment *Trigonotylus*

Genus *Dolichomiris* Reuter

18. *Dolichomiris linearis* Reuter.

(Figures 31, 32.)

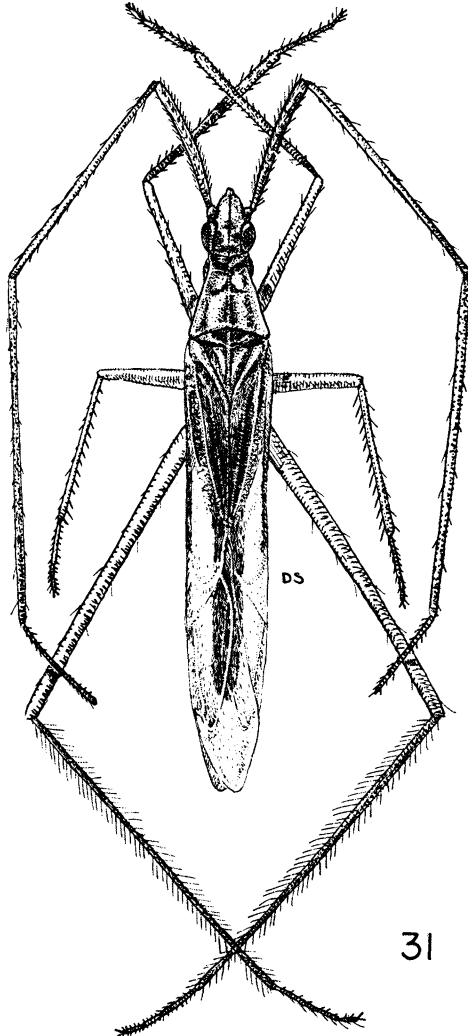


FIGURE 31. *Dolichomiris linearis* Reuter. Male.