

length 0.6 mm, width 0.28 mm. Embolium: width 0.15 mm. The type is a female from Bugaba, 800-1500 ft., Champion.

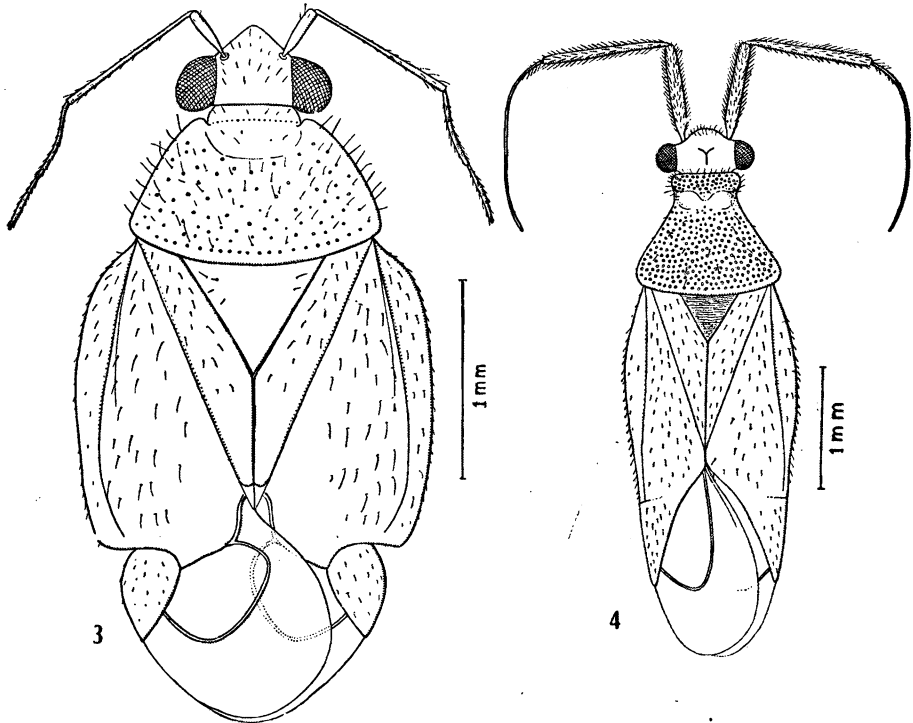


Fig. 3 — *Carmelocoris sanguineus* (Distant, 1893), female, holotype. Fig. 4 — *Bugabacoris marginatus* (Distant, 1893), male, holotype.

### **Bugabacoris g. n.**

Bryocorini. Head rounded in front, vertex sulcate at middle, eyes prominent slightly pedunculate, vertex following a very short neck, rostrum reaching the middle of mesosternum. Antennal segments I and II thick, strongly pilose, the pilosity as long as thickness of segments, 3rd and 4th segments very slender, the first segment slender at extreme base, the 2nd less than twice as long as 1st. Pronotum strongly punctate, narrowed in front, calli distinct, anterior portion of pronotum (collar-like area) large, as long as width of an eye, posterior angles and posterior margin slightly rounded, scutellum punctate and small. Hemelytra smooth, scanty and moderately longly pilose, embolium very narrow at base, thence strongly widened only to narrow again towards cuneus, the latter very long and pointed, areola large, rounded apically, as long as cuneus. Posterior femora narrowed near apex, tibiae thick, tarsi short, the hind femora are noticeably enlarged apically.

Type species: *Zoilus marginatus* Distant, 1893.