

middle, collar distinct, wide, strongly delimited from anterior margin of disk of pronotum which is deeply sinuated, the anterior angles rounded and prominent, lateral margins carinate, posterior margins and angles widely rounded, scutellum large, convex, smooth. Hemelytra with clavus twice as long as scutellum, appearing blunt apically owing to membranous apex, embolium very wide, cuneal fracture very wide and deep, cuneus rounded externally, apex blunt, membrane uniareolate, the cell apically rounded, vein not reaching apex of cuneus, hairs of body scanty and erect.

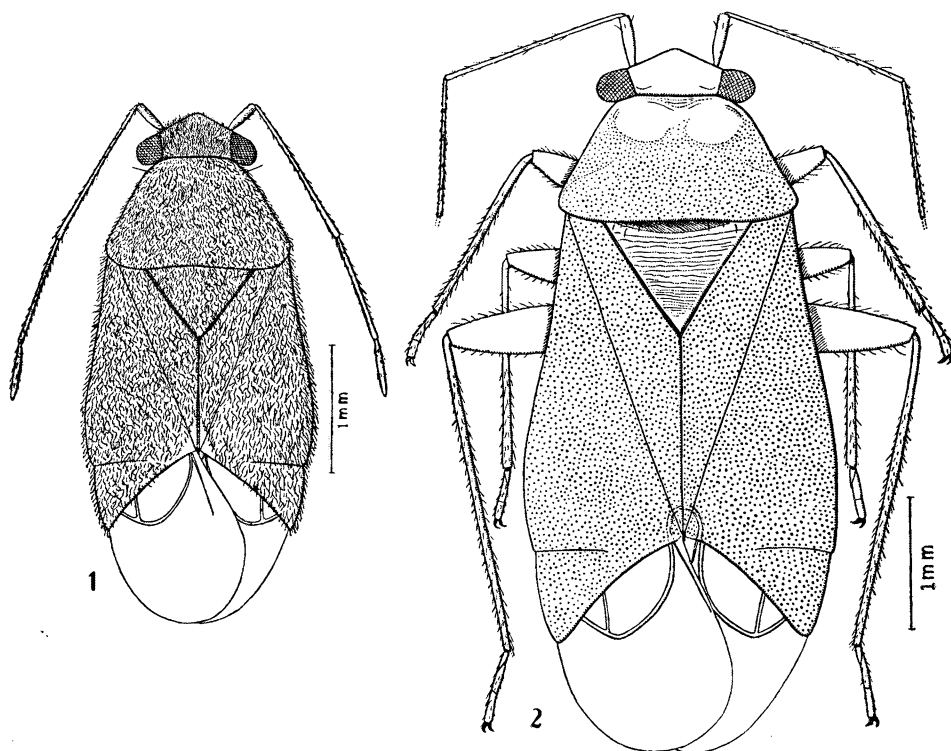


Fig. 1 — *Amulacoris subalbicans* (Distant, 1893), female, allotype. Fig. 2 — *Guerrerocoris punctatus* (Distant, 1893), female, holotype.

Type species: *Carmelus sanguineus* Distant, 1893.

This genus runs in the key to the *Hyaliadini* (*Bol. Mus. Goeldi*, 11 (2):25, 1955) to couplet 10. It can be differentiated from *Fuscus* Distant, 1884 by its strongly carinate pronotum, by the very deep and wide cuneal fracture and by the cuneus rounded externally.

The measurements of the type species (fig. 3) are as follows: length 3.2 mm, width 1.6 mm. Head: full length 0.52 mm, width 0.76 mm, vertex 0.36 mm. Antennae: segment I, length 0.24 mm; II, 0.72 mm; III, 0.38 mm; IV, 0.35 mm. Pronotum: length 0.85 mm, width at base 1.2 mm. Cuneus: