

20

Figure 20. *Neurocolpus nubilus*

#### Genus *Capsus* Fabricius

Black, shiny species. Carina between eyes absent. Pubescence simple, appressed.

One species introduced from Europe, was collected.

#### *Capsus ater* (Linnaeus) (Fig. 22)

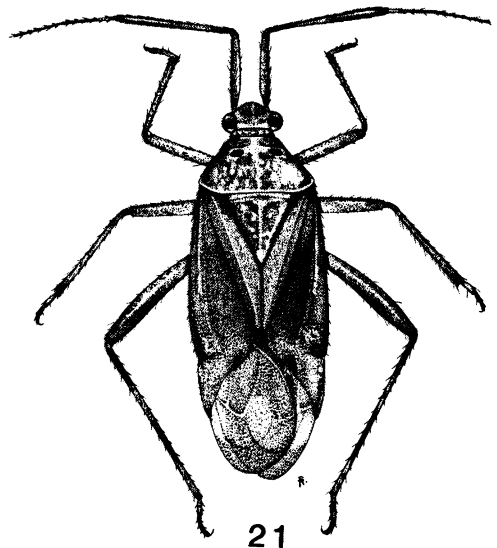
*Cimex ater* Linnaeus, 1758: 447.

*Capsus ater*: Fabricius, 1803: 241.

Length 5.7-6.1 mm; width 2.5-3.0 mm. Second antennal segment clavate (Fig. 22).

Overwinters in the egg stage. Nymphs appear in early May and adults in early June, often earlier; adults gradually die out by end of July. Phytophagous. Breeds on grasses but when grass is cut or during a dry season, adults migrate to nearby apple trees and feed on the fruit or foliage.

Distribution: Alaska, eastern USA; British Columbia, Ontario, Québec, Nova Scotia.



21

Figure 21. *Taedia pallidula*